

KALIPLARIN ÖTESİNDE BETON KALIPLARI ÜRETİYORUZ

*WE MANUFACTURE CONCRETE MOLDS BEYOND THE STEREOTYPED IDEAS*

BETON BLOK ÜRÜNLERİ KALIP KATALOĞU

*CONCRETE BLOCK PRODUCTS MOLD CATALOGUE*







## İhtiyaçlarınıza Göre Çeliği Şekillendiriyoruz

NAMTAŞ, müşterilerinin ihtiyaçlarına cevap verebilecek en ideal beton ürün kalıbı üretim hizmetini sunar. Kalıp üretimine uygun, yüksek sertlik derecesine sahip çelik malzeme özenle seçilir ve yüksek teknoloji CNC tezgahlarda işlenir. Üstün ARGE çalışmalarımız sonucunda oluşturduğumuz kalite standartları doğrultusunda analiz ve montaj işlemlerinden geçirilen kalıplar, müşterilerimizin kullanımına sunulur.

## *We Shape The Steel Considering Your Needs*

*NAMTAŞ offers the ideal concrete product mold manufacturing service to be able to respond the needs of the customers. High tempered steel material that suitable for mold manufacturing is chosen carefully and processed by high-tech CNC machines.*

*The molds which are put through analyses and assembly processes in line with the quality standards in consequence of our superior Research and Development studies are brought into the use of our customers.*



## İÇERİK / CONTENTS

PARKE TAŞI / <i>PAVING STONE</i>	2
BORDÜR / <i>CURBSTONE</i>	38
BETON-BİMS BLOK / <i>HOLLOW BLOCK</i>	44
BETON OLUKLAR / <i>CONCRETE GUTTERS</i>	54
DEKORATİF ÜRÜNLER / <i>DECORATIVE PRODUCTS</i>	58

PARKE TAŞI / PAVING STONE

BORDÜR / CURBSTONE

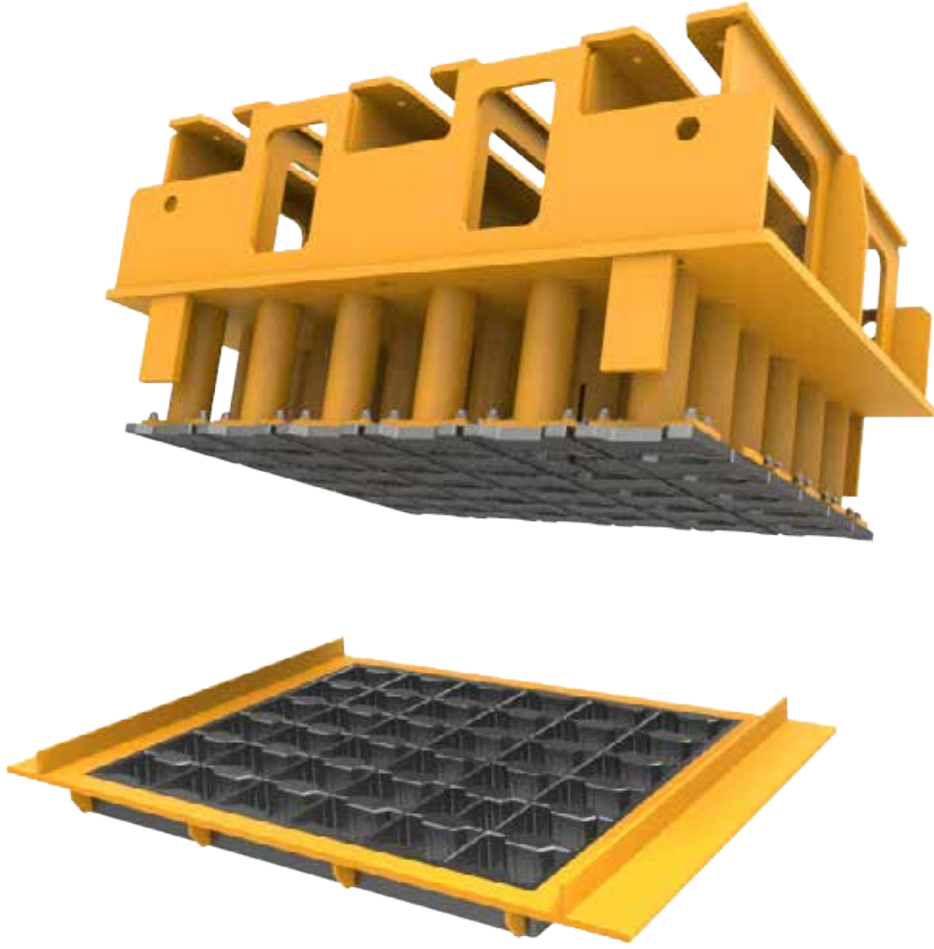
BETONBİMS BLOK / HOLLOW BLOCK

BETON OLUKLAR / CONCRETE GUTTERS

DEKORATİF ÜRÜNLER / DECO. PRODUCTS

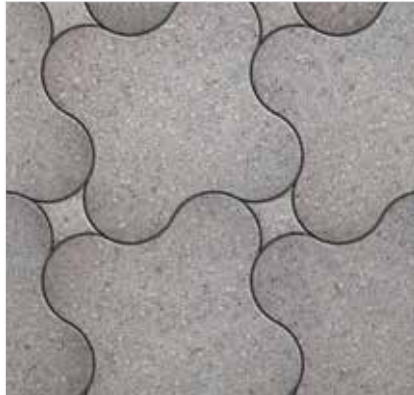
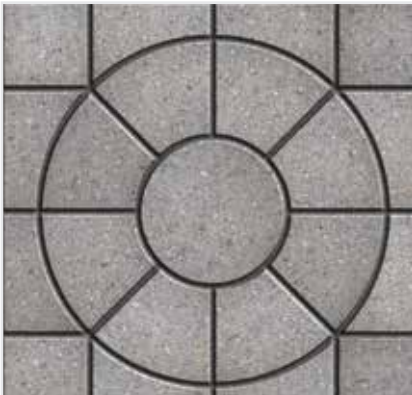
- Teknik özellik verileri standart donanıma göre düzenlenmiştir. Müşteri istekleri, kurulum yeri ve montaj şekline göre değişiklik gösterebilir.  
*Technical specification datasheets were arranged according to the standard equipment. They may be varied depending on the customer needs, field and montage.*
- Namtaş, gerek gördüğünde teknik özelliklerde değişiklik yapma hakkına sahiptir.  
*Namtaş has the rights of changing the technical specifications if there a is necessity.*

## PARKE TAŞI | PAVING STONE



Kolay uygulanabilirliği, uzun ömrü ve düşük maliyet avantajıyla parke taşları, park, bahçe ve meydanlarda, yürüyüş yollarında, peyzaj mimarisinde ve inşaat sektöründe en çok tercih edilen ürünlerdir. NAMTAŞ, yüksek kalite ve geniş çeşitlilikte ürün yelpazesiyle müşterilerine uygun çözümlerle, talep edilen beton parke taşı ürünlerinin kalıplarını sunar.

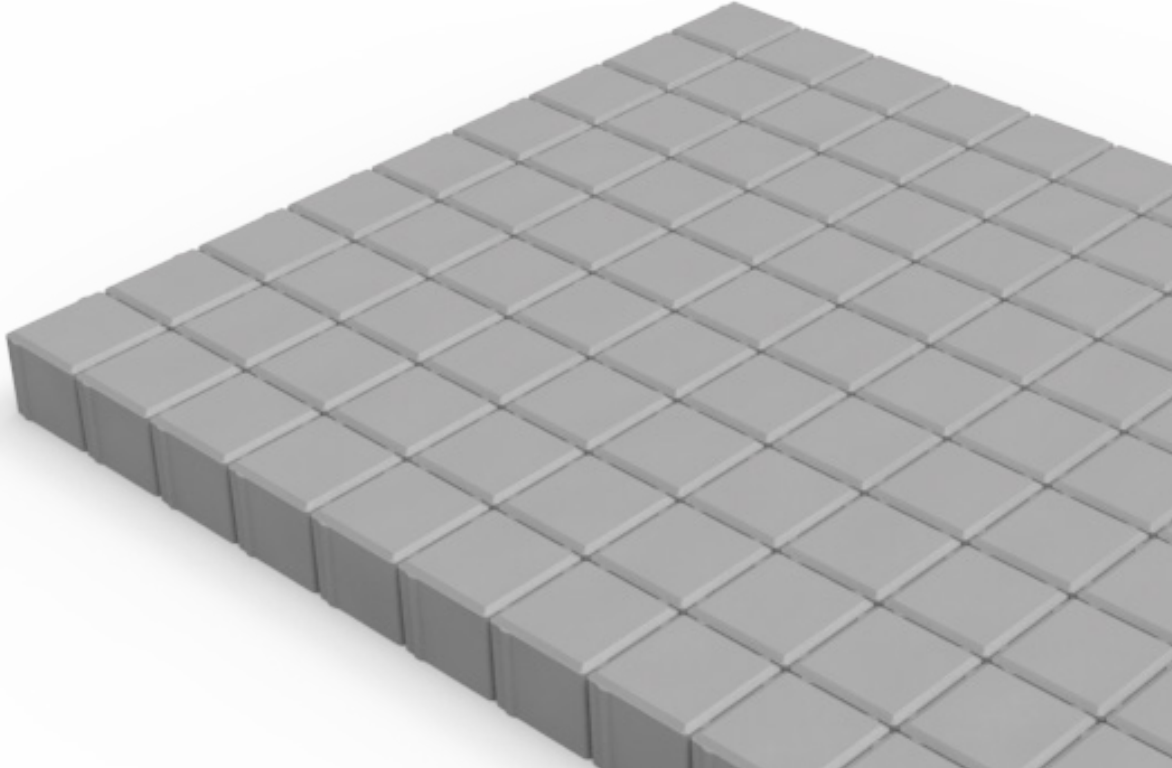
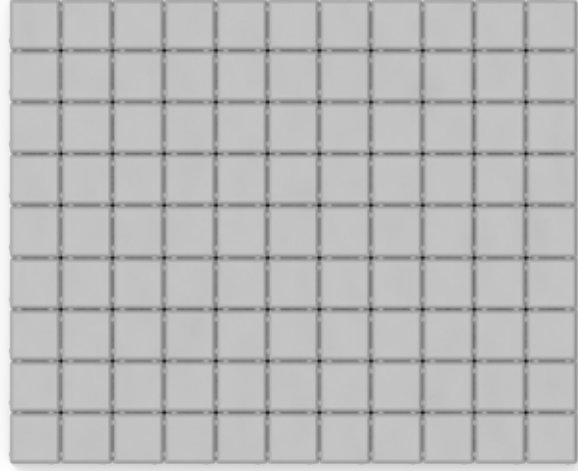
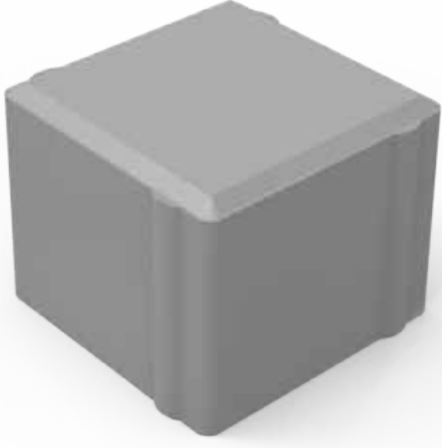
*Due to its long life and the advantage of low cost the paving stones are the preferable products for parks, gardens and squares, walking paths, landscape architecture and building sector. Namtaş offers the requested concrete paving stone products' molds with high quality and the wide variety of product range that appropriate solutions to the customers.*





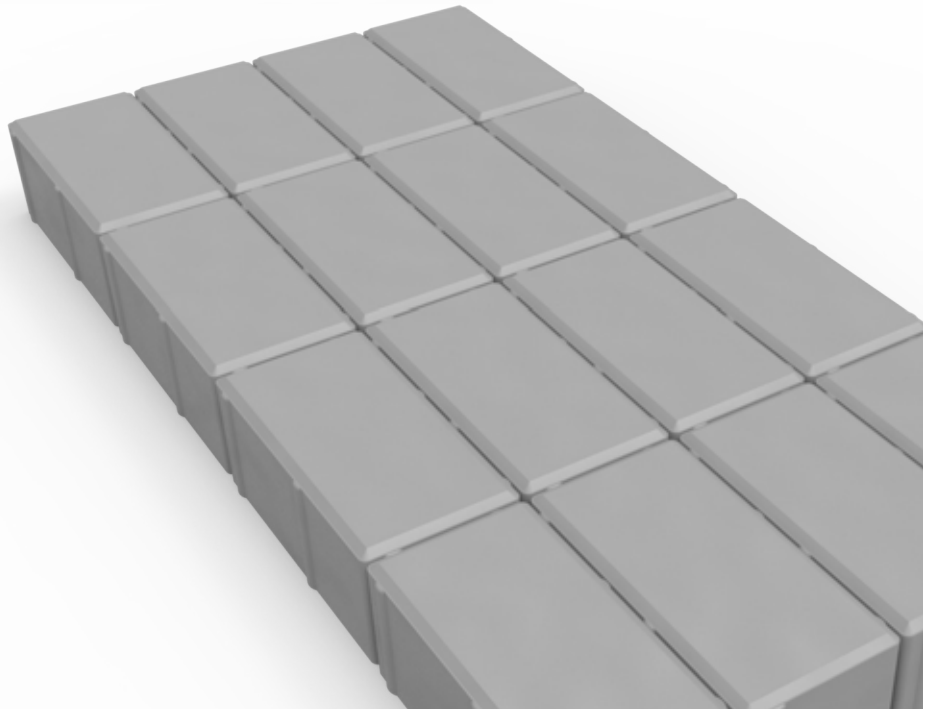
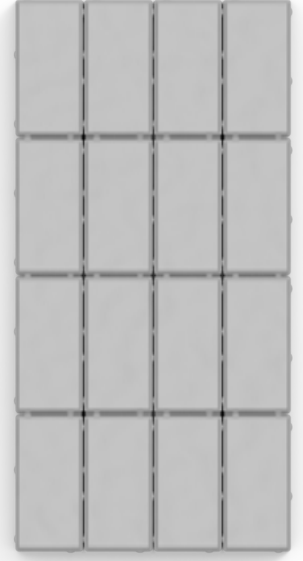
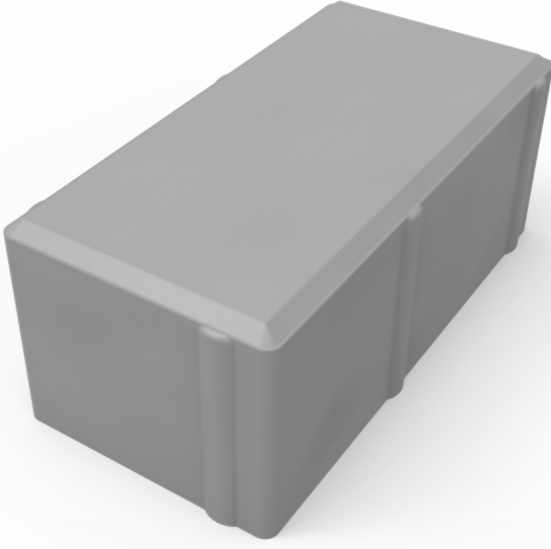
## PARKE TAŐI / PAVING STONE

Ürün Kodu <i>Product Code</i>	Ölçüler (mm) <i>Dimensions (mm)</i>	Birim Alan (dm <sup>2</sup> ) <i>Unit Area (dm<sup>2</sup>)</i>	Adet / (m <sup>2</sup> ) <i>Unit / (m<sup>2</sup>)</i>
K1010	100 x 100	1	100



## PARKE TAŐI | PAVING STONE

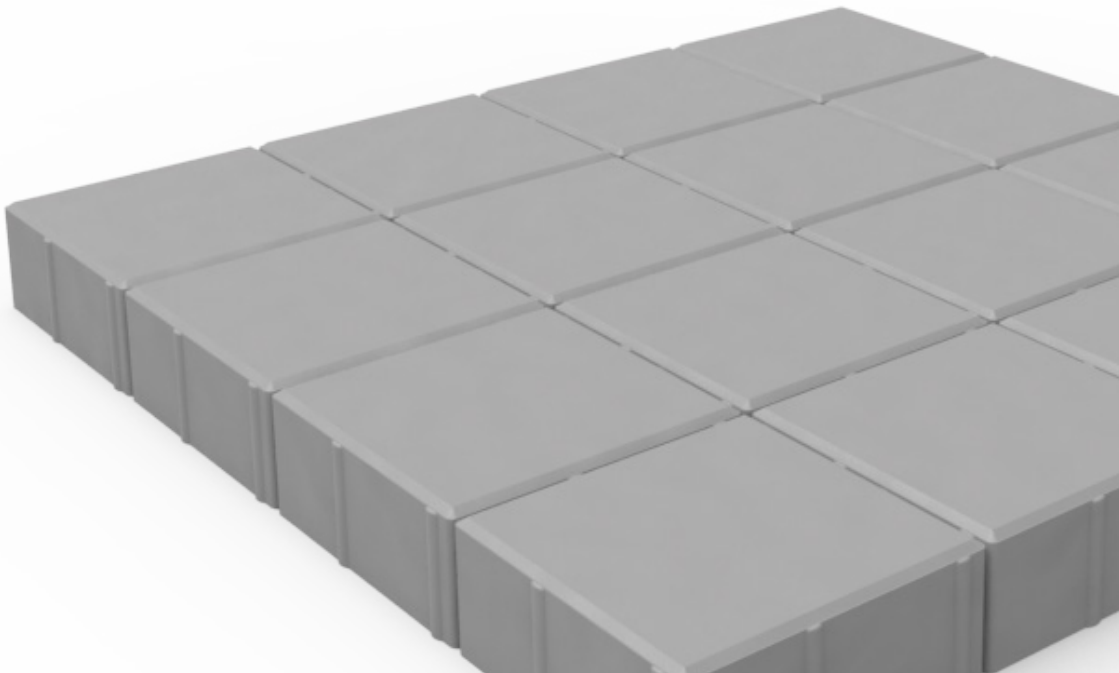
Ürün Kodu <i>Product Code</i>	Ölçüler (mm) <i>Dimensions (mm)</i>	Birim Alan (dm <sup>2</sup> ) <i>Unit Area (dm<sup>2</sup>)</i>	Adet / (m <sup>2</sup> ) <i>Unit / (m<sup>2</sup>)</i>
K1012	100 x 200	2	50





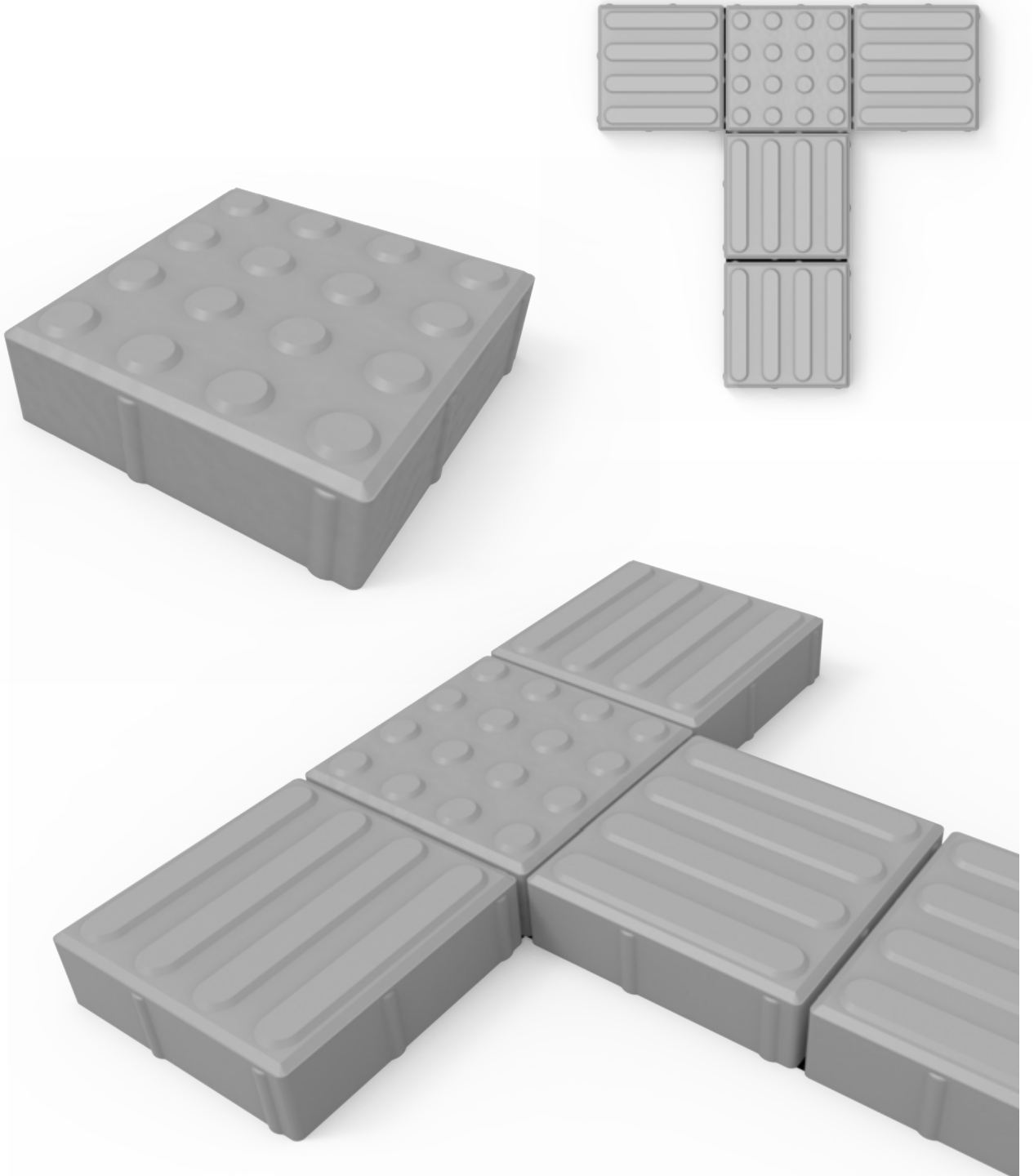
## PARKE TAŐI | PAVING STONE

Ürün Kodu <i>Product Code</i>	Ölçüler (mm) <i>Dimensions (mm)</i>	Birim Alan (dm <sup>2</sup> ) <i>Unit Area (dm<sup>2</sup>)</i>	Adet / (m <sup>2</sup> ) <i>Unit / (m<sup>2</sup>)</i>
K1020	200 x 200	4,00	25
K1025	250 x 250	6,25	16
K1030	300 x 300	9,00	11,1
K1040	400 x 400	16	6,2



## PARKE TAŐI | PAVING STONE

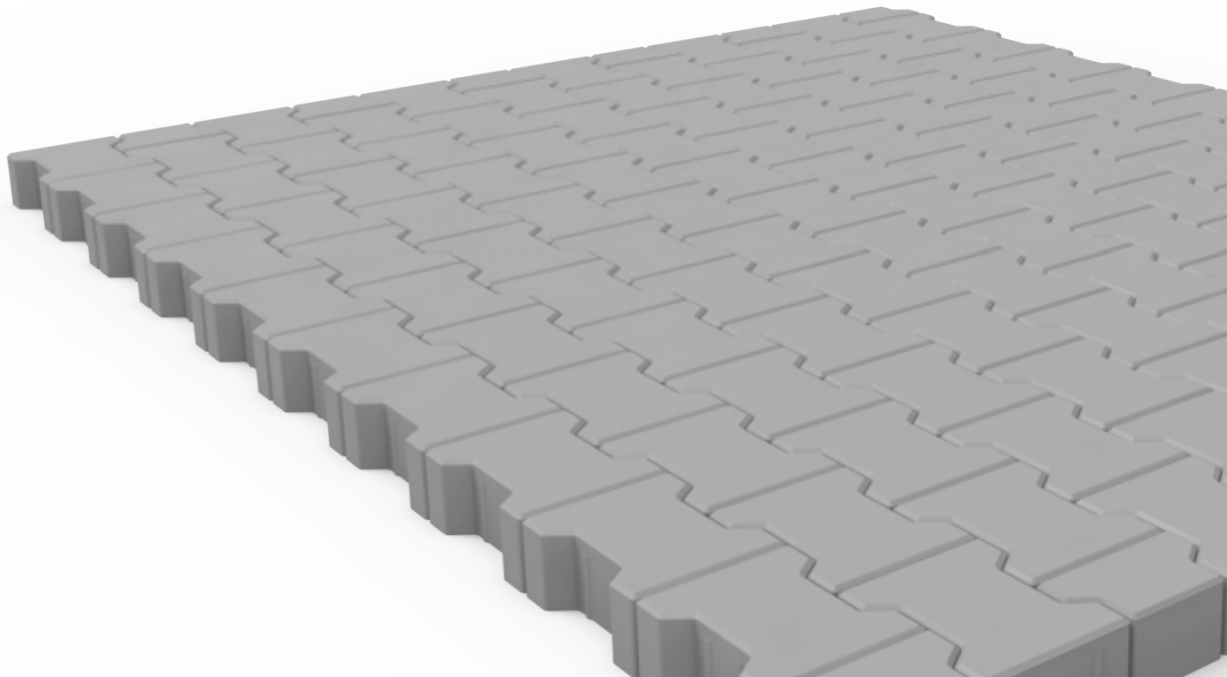
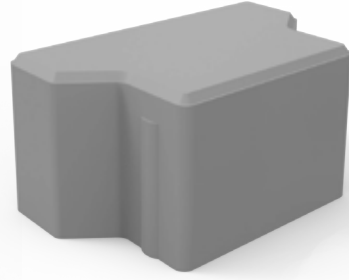
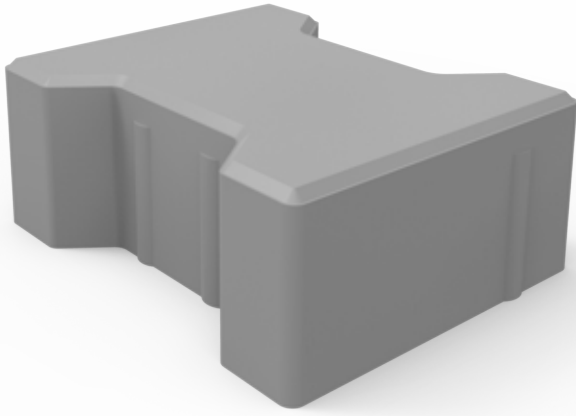
Ürün Kodu <i>Product Code</i>	Ölçüler (mm) <i>Dimensions (mm)</i>	Birim Alan (dm <sup>2</sup> ) <i>Unit Area (dm<sup>2</sup>)</i>	Adet / (m <sup>2</sup> ) <i>Unit / (m<sup>2</sup>)</i>
K1021	200 x 200	4,00	25
K1031	300 x 300	9,00	11,1
K1041	400 x 400	16,00	6,25





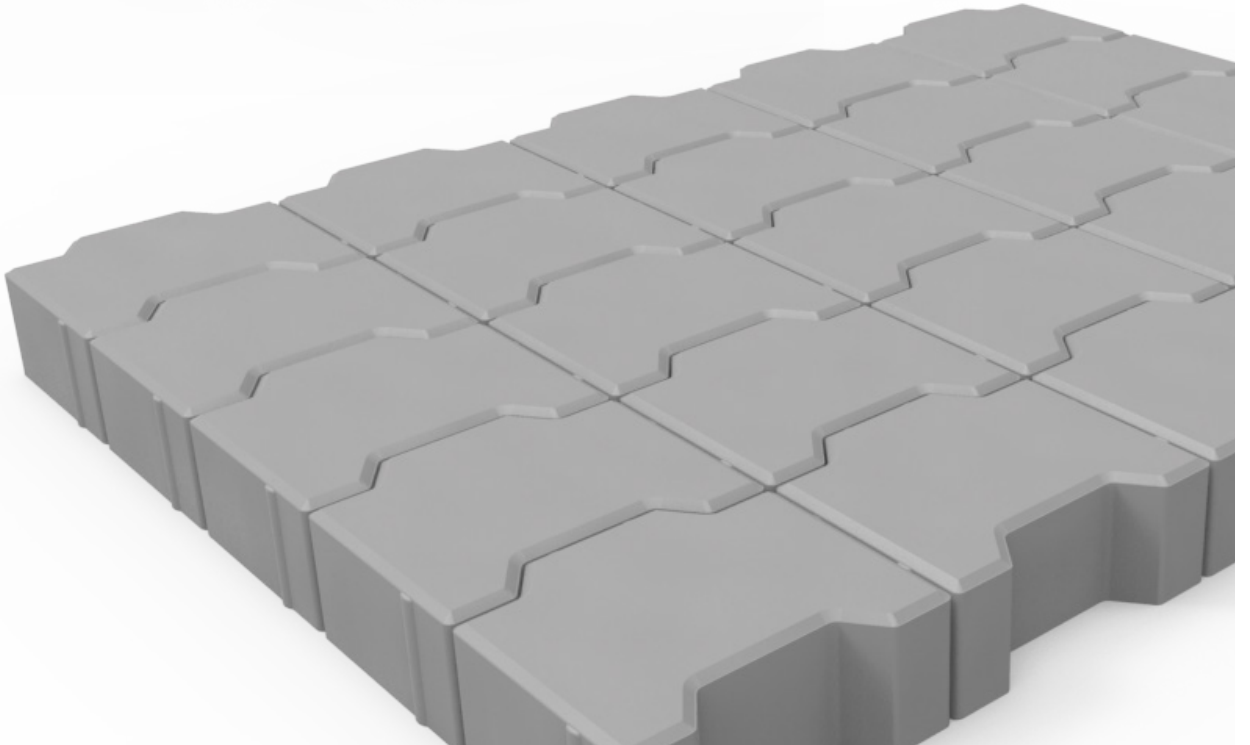
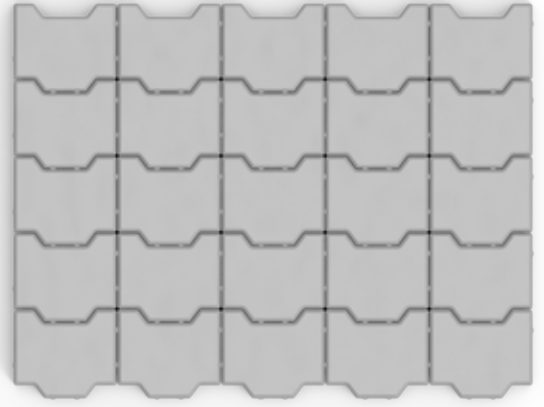
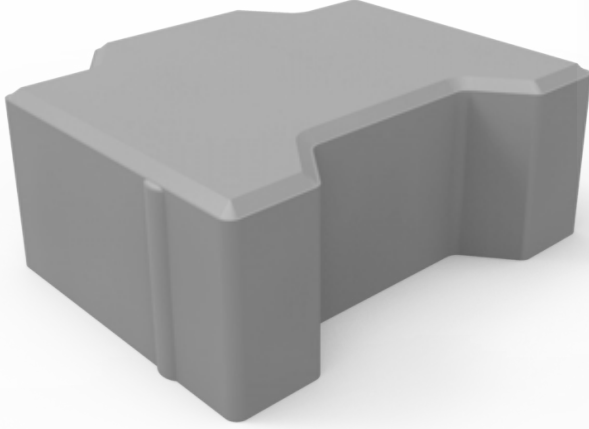
## PARKE TAŐI / PAVING STONE

Ürün Kodu <i>Product Code</i>	Ölçüler (mm) <i>Dimensions (mm)</i>	Birim Alan (dm <sup>2</sup> ) <i>Unit Area (dm<sup>2</sup>)</i>	Adet / (m <sup>2</sup> ) <i>Unit / (m<sup>2</sup>)</i>
K1110	200 x 140	2,80	35,7
K1111	100 x 140	1,40	71,4



## PARKE TAŐI / PAVING STONE

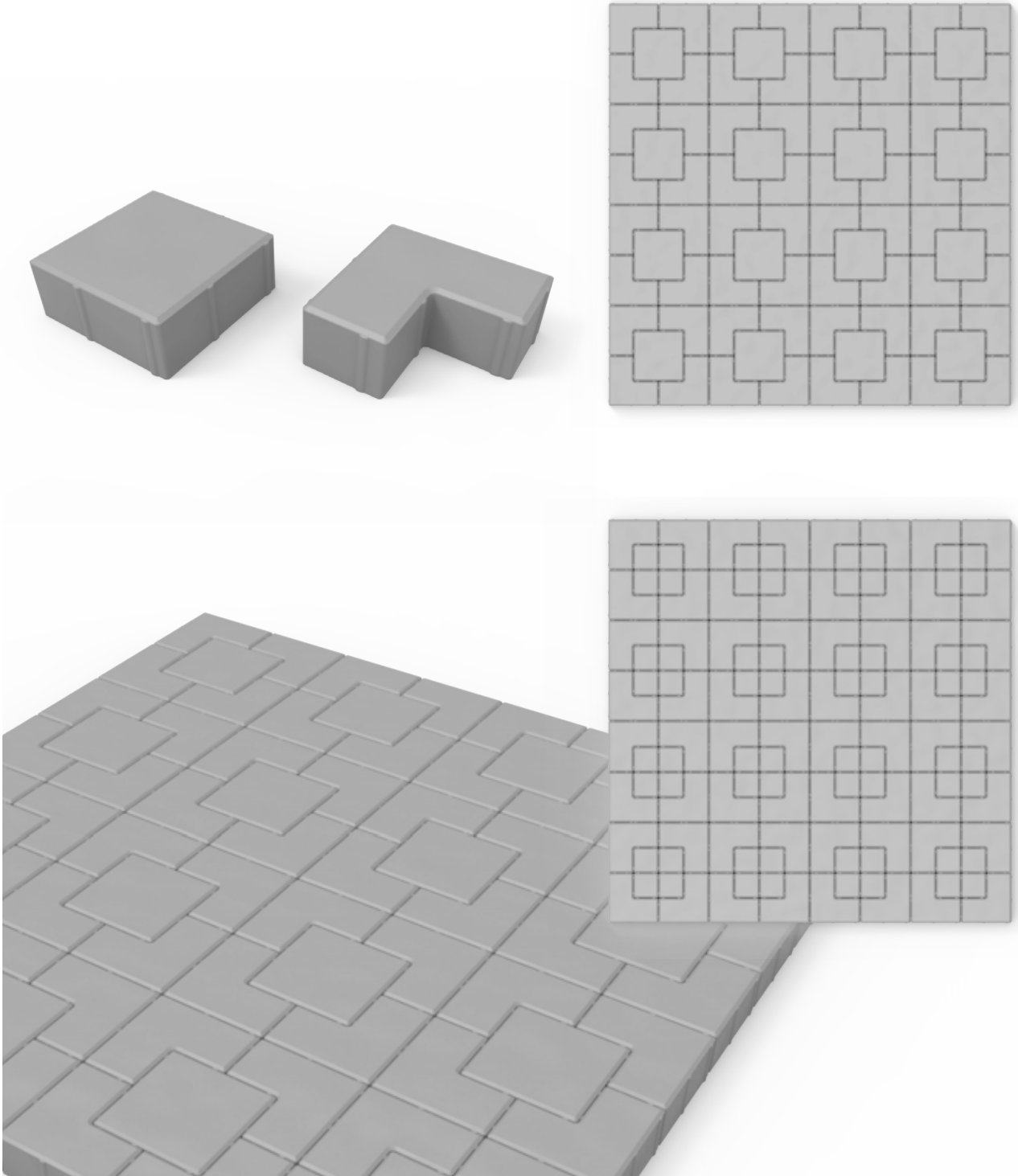
Ürün Kodu <i>Product Code</i>	Ölçüler (mm) <i>Dimensions (mm)</i>	Birim Alan (dm <sup>2</sup> ) <i>Unit Area (dm<sup>2</sup>)</i>	Adet / (m <sup>2</sup> ) <i>Unit / (m<sup>2</sup>)</i>
K1113	200 x 170	3,40	29,5





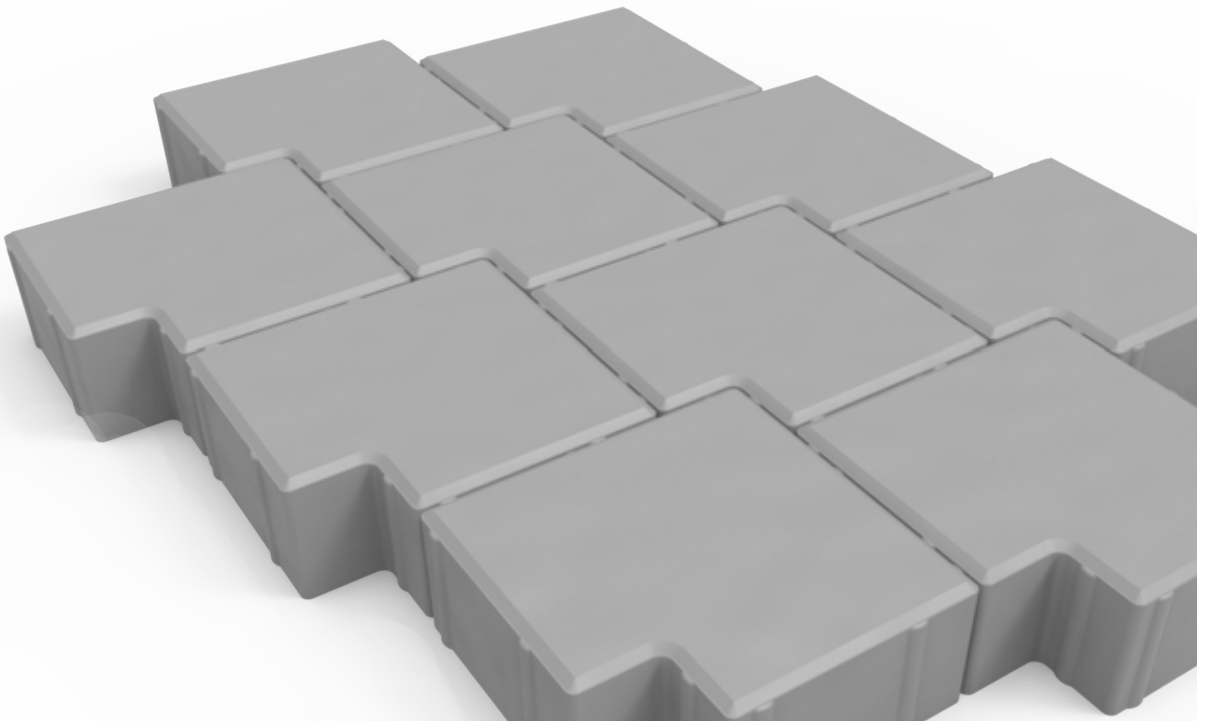
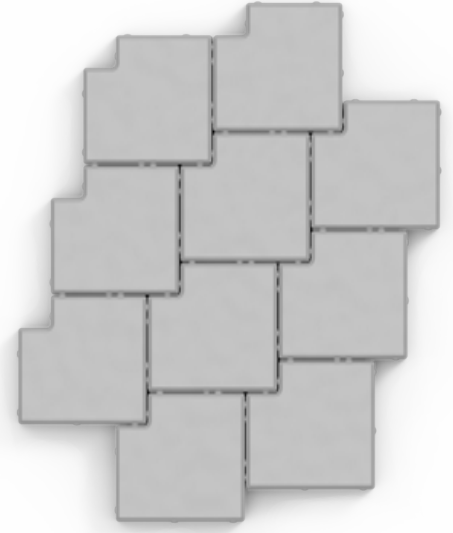
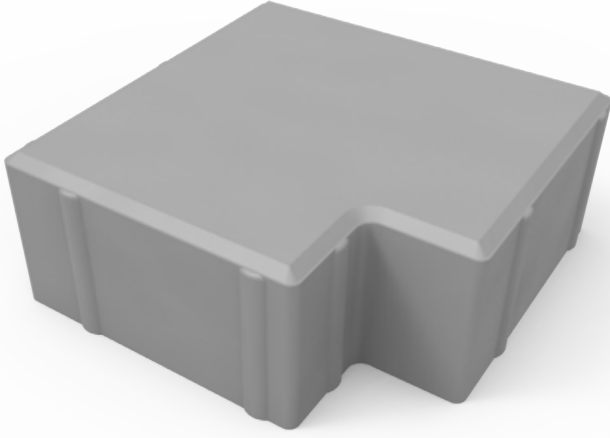
## PARKE TAŐI | PAVING STONE

Ürün Kodu <i>Product Code</i>	Ölçüler (mm) <i>Dimensions (mm)</i>	Birim Alan (dm <sup>2</sup> ) <i>Unit Area (dm<sup>2</sup>)</i>	Adet / (m <sup>2</sup> ) <i>Unit / (m<sup>2</sup>)</i>
K1120	200/100 x 200/100	2,60	38,5
K1020	200 x 200	4,00	25
K1010	100 x 100	1	100



## PARKE TAŐI / PAVING STONE

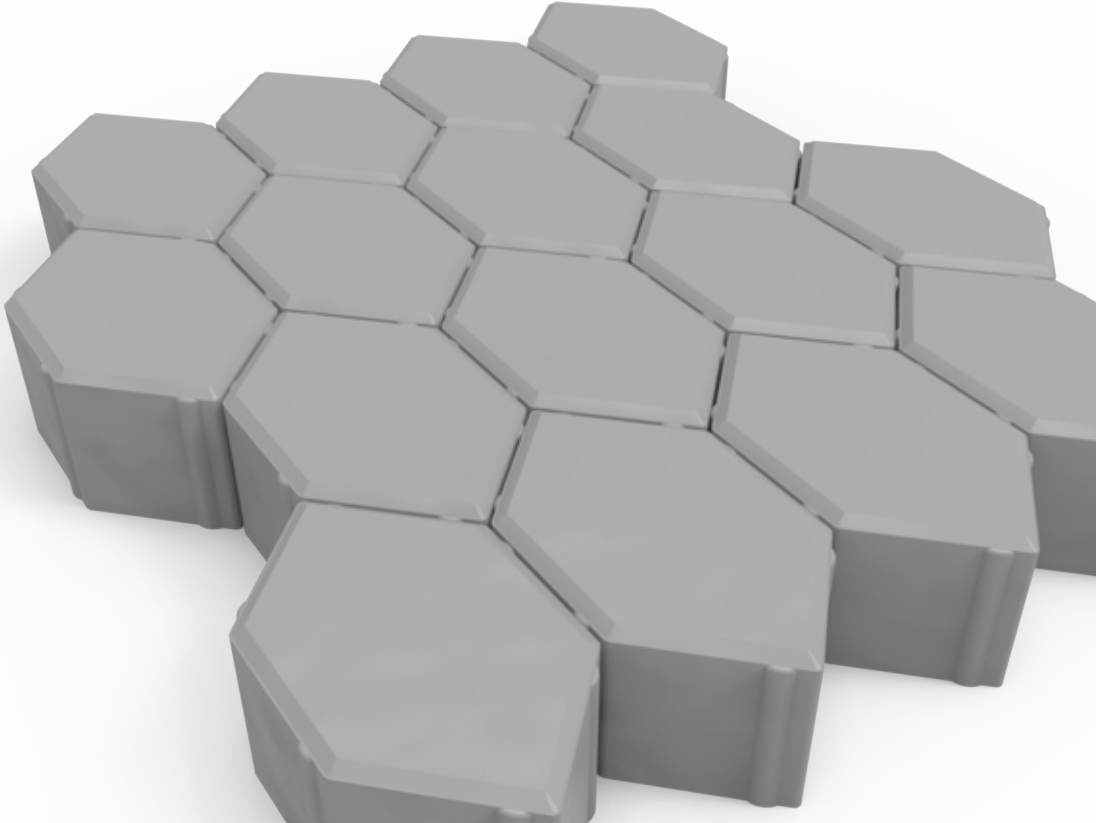
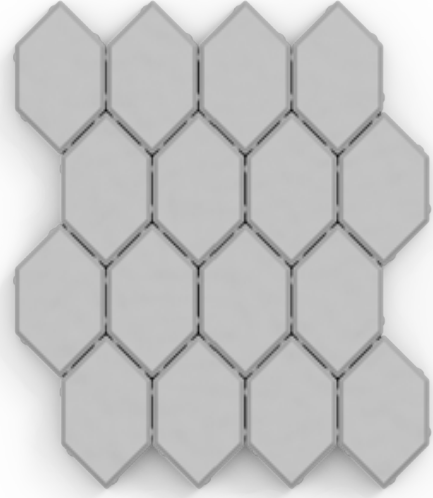
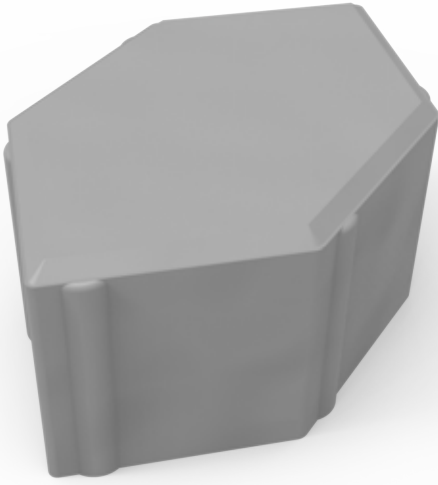
Ürün Kodu <i>Product Code</i>	Ölçüler (mm) <i>Dimensions (mm)</i>	Birim Alan (dm <sup>2</sup> ) <i>Unit Area (dm<sup>2</sup>)</i>	Adet / (m <sup>2</sup> ) <i>Unit / (m<sup>2</sup>)</i>
K1121	200 x 200	4,00	25





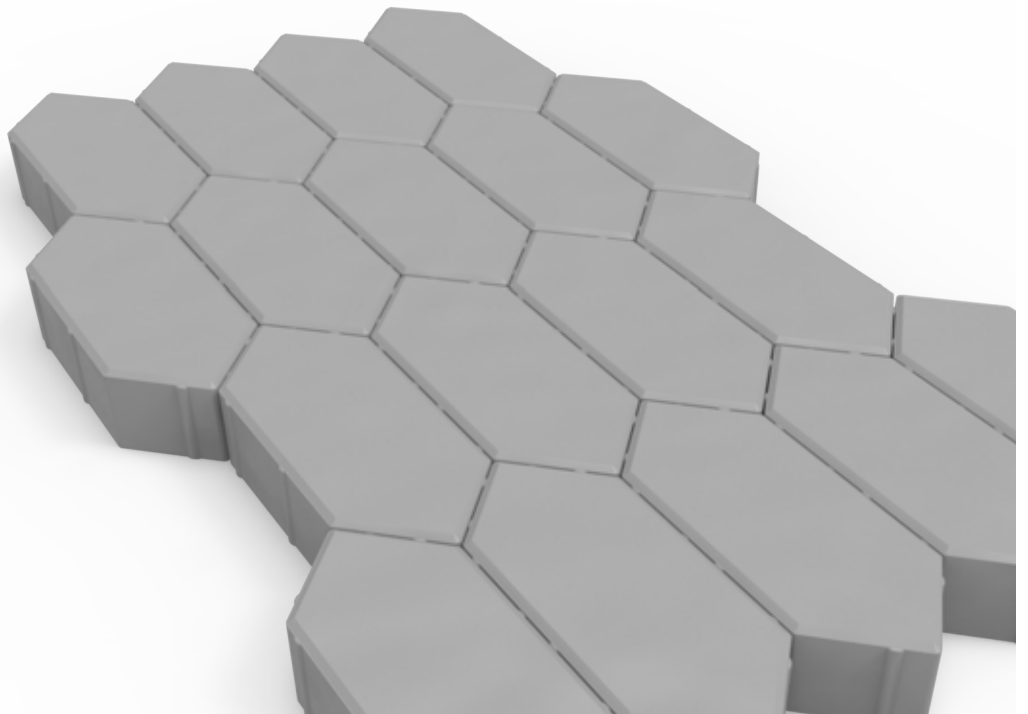
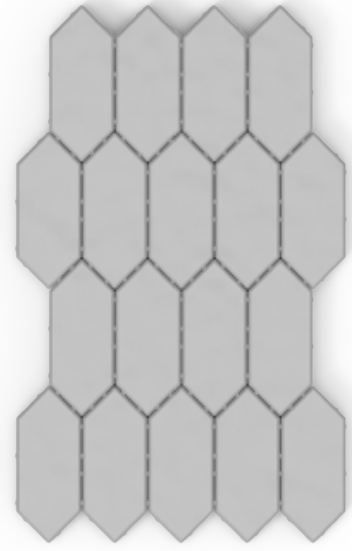
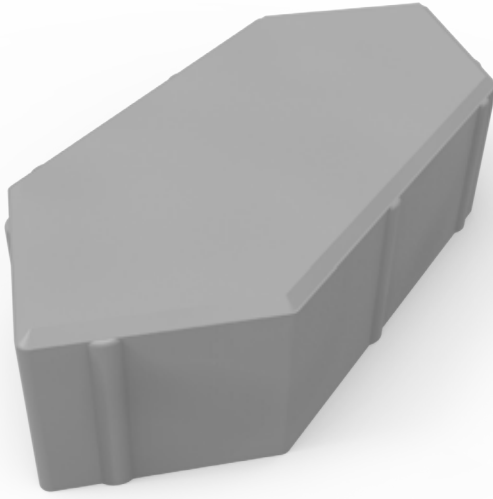
## PARKE TAŐI / PAVING STONE

Ürün Kodu <i>Product Code</i>	Ölçüler (mm) <i>Dimensions (mm)</i>	Birim Alan (dm <sup>2</sup> ) <i>Unit Area (dm<sup>2</sup>)</i>	Adet / (m <sup>2</sup> ) <i>Unit / (m<sup>2</sup>)</i>
K1130	141,4 x 117,2	1,66	60,3



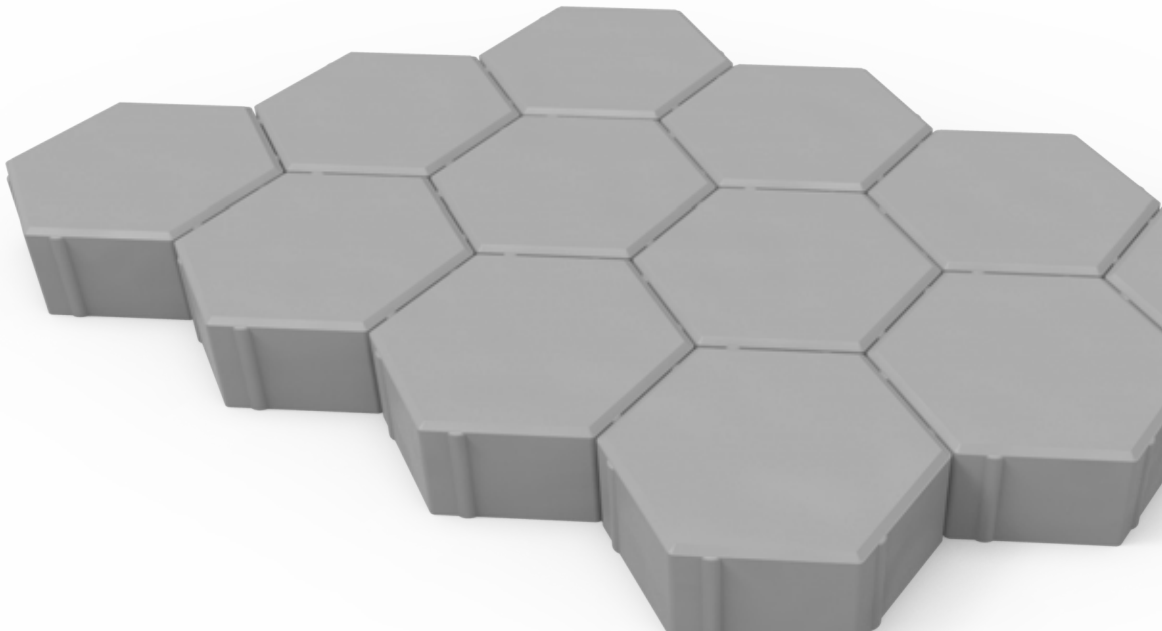
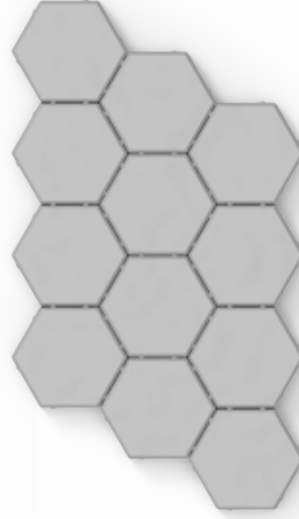
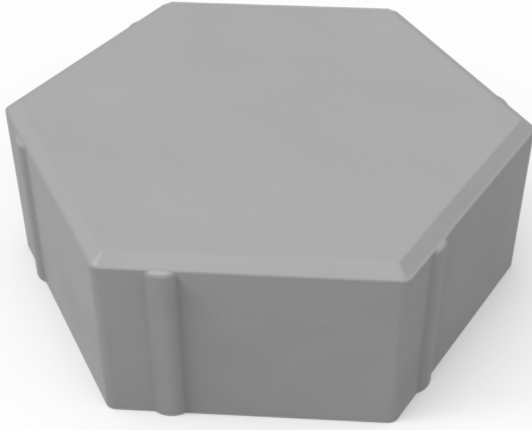
## PARKE TAŐI / PAVING STONE

Ürün Kodu <i>Product Code</i>	Ölçüler (mm) <i>Dimensions (mm)</i>	Birim Alan (dm <sup>2</sup> ) <i>Unit Area (dm<sup>2</sup>)</i>	Adet / (m <sup>2</sup> ) <i>Unit / (m<sup>2</sup>)</i>
K1131	140 x 333	4,66	21,4



## PARKE TAŐI / PAVING STONE

Ürün Kodu <i>Product Code</i>	Ölçüler (mm) <i>Dimensions (mm)</i>	Birim Alan (dm <sup>2</sup> ) <i>Unit Area (dm<sup>2</sup>)</i>	Adet / (m <sup>2</sup> ) <i>Unit / (m<sup>2</sup>)</i>
K1132	210 x 173,3	3,46	28,9



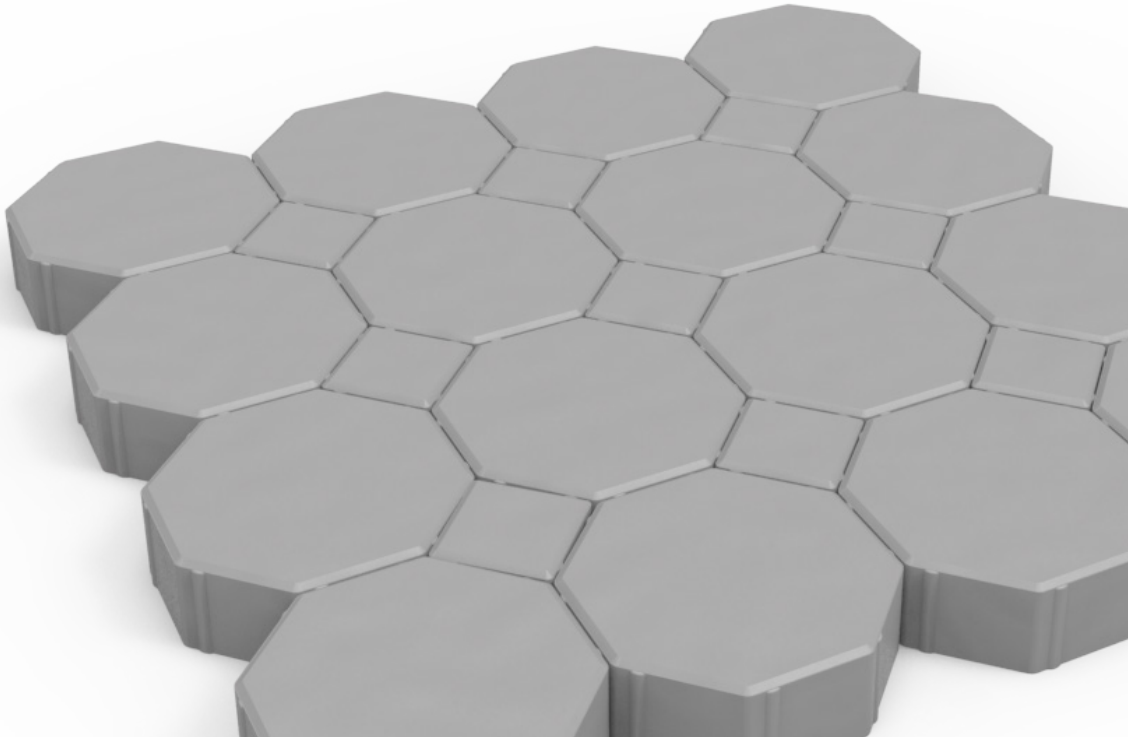
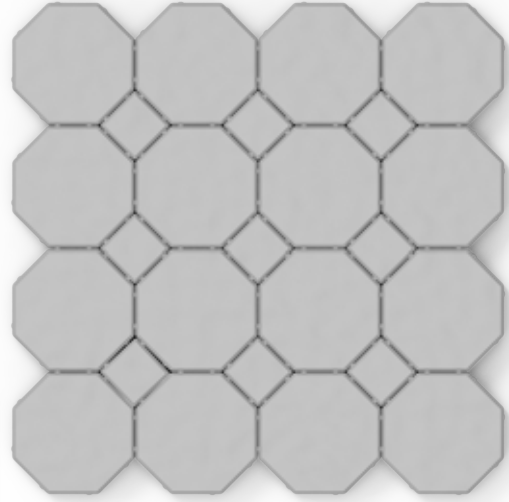
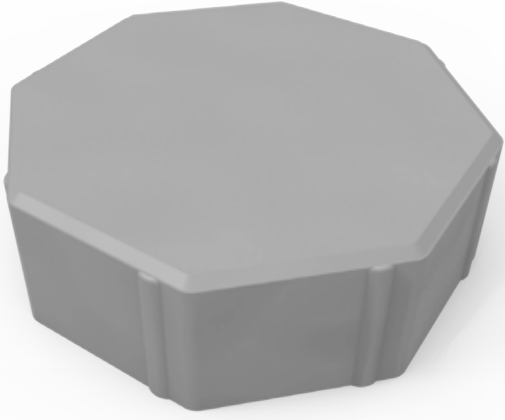






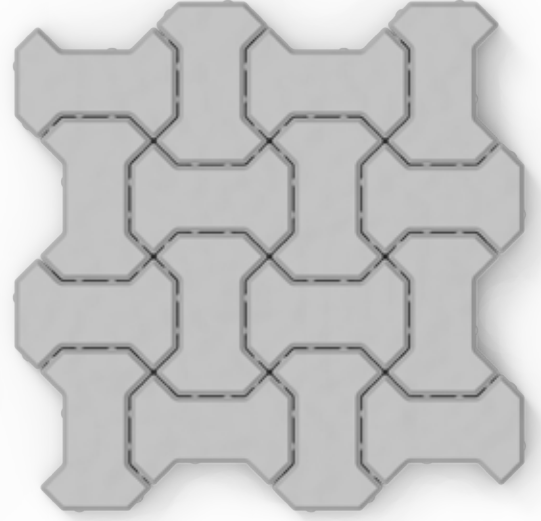
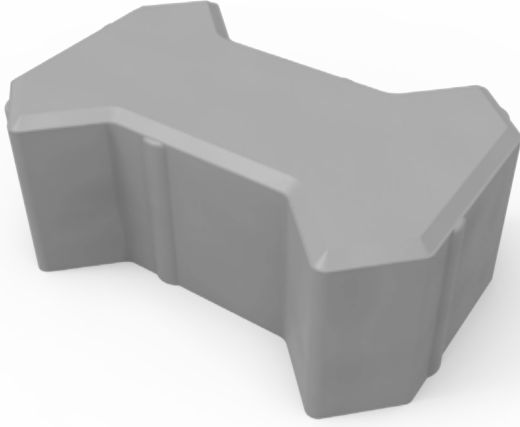
## PARKE TAŐI / PAVING STONE

Ürün Kodu <i>Product Code</i>	Ölçüler (mm) <i>Dimensions (mm)</i>	Birim Alan (dm <sup>2</sup> ) <i>Unit Area (dm<sup>2</sup>)</i>	Adet / (m <sup>2</sup> ) <i>Unit / (m<sup>2</sup>)</i>
K1140	200 x 200	3,32	25



## PARKE TAŐI | PAVING STONE

Ürün Kodu <i>Product Code</i>	Ölçüler (mm) <i>Dimensions (mm)</i>	Birim Alan (dm <sup>2</sup> ) <i>Unit Area (dm<sup>2</sup>)</i>	Adet / (m <sup>2</sup> ) <i>Unit / (m<sup>2</sup>)</i>
K1150	141,4 x 141,4	2	50



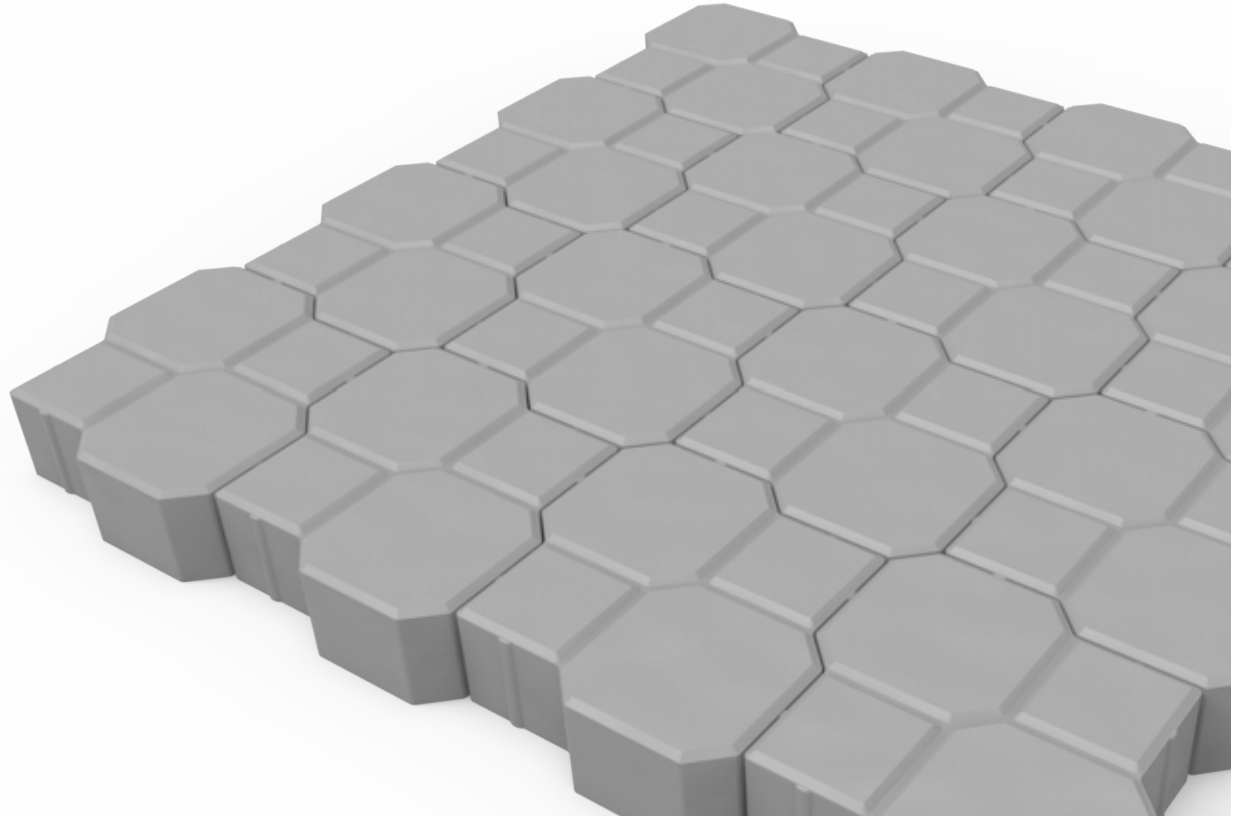
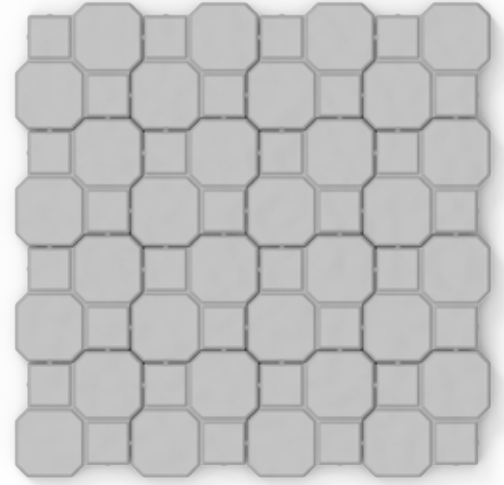
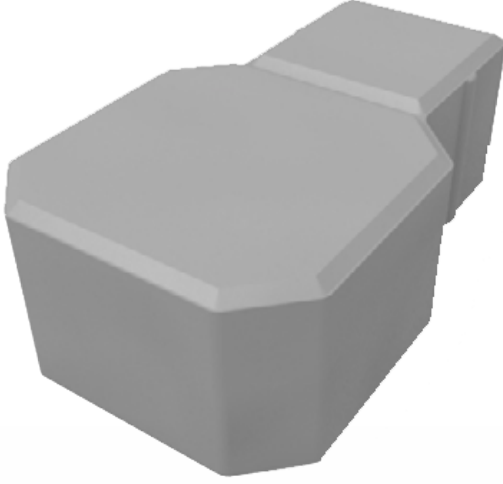






## PARKE TAŐI | PAVING STONE

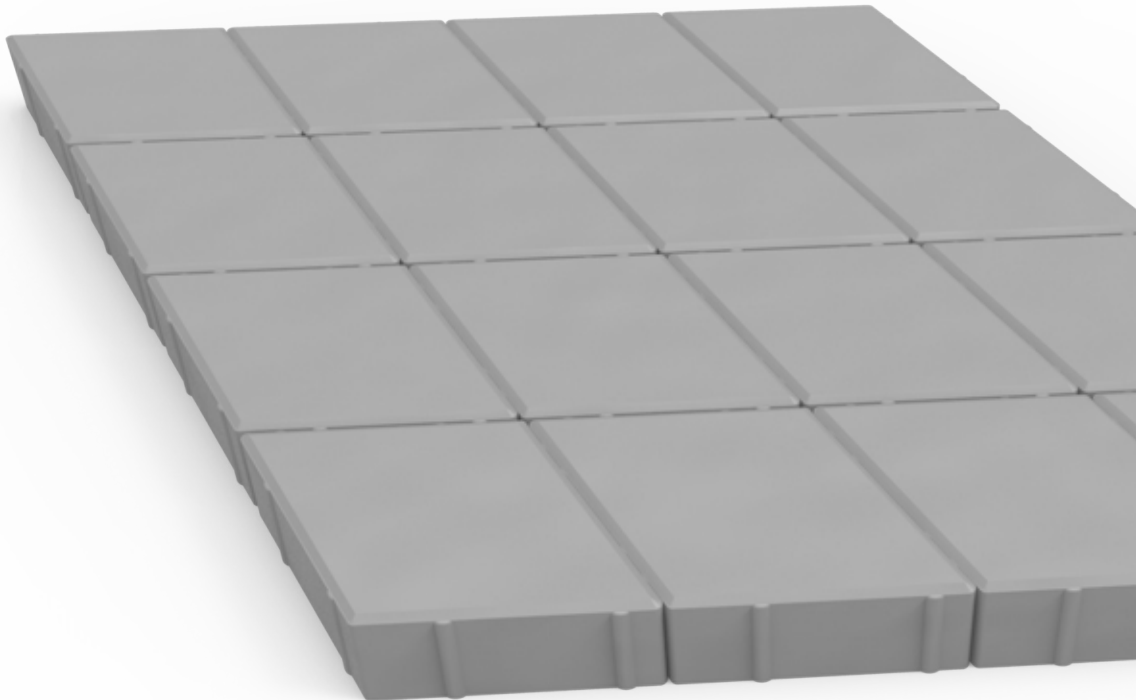
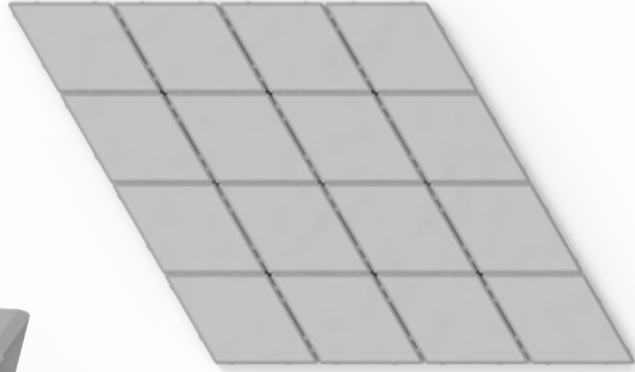
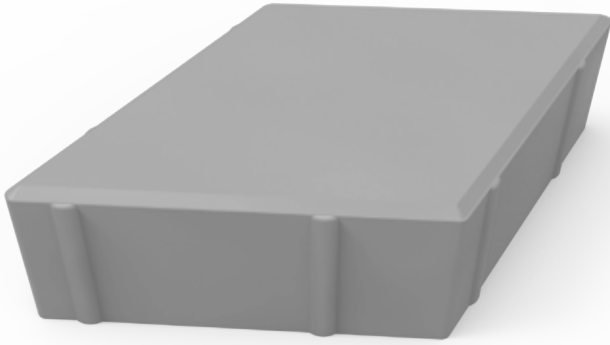
Ürün Kodu <i>Product Code</i>	Ölçüler (mm) <i>Dimensions (mm)</i>	Birim Alan (dm <sup>2</sup> ) <i>Unit Area (dm<sup>2</sup>)</i>	Adet / (m <sup>2</sup> ) <i>Unit / (m<sup>2</sup>)</i>
K1160	230 x 115	2,65	37,8



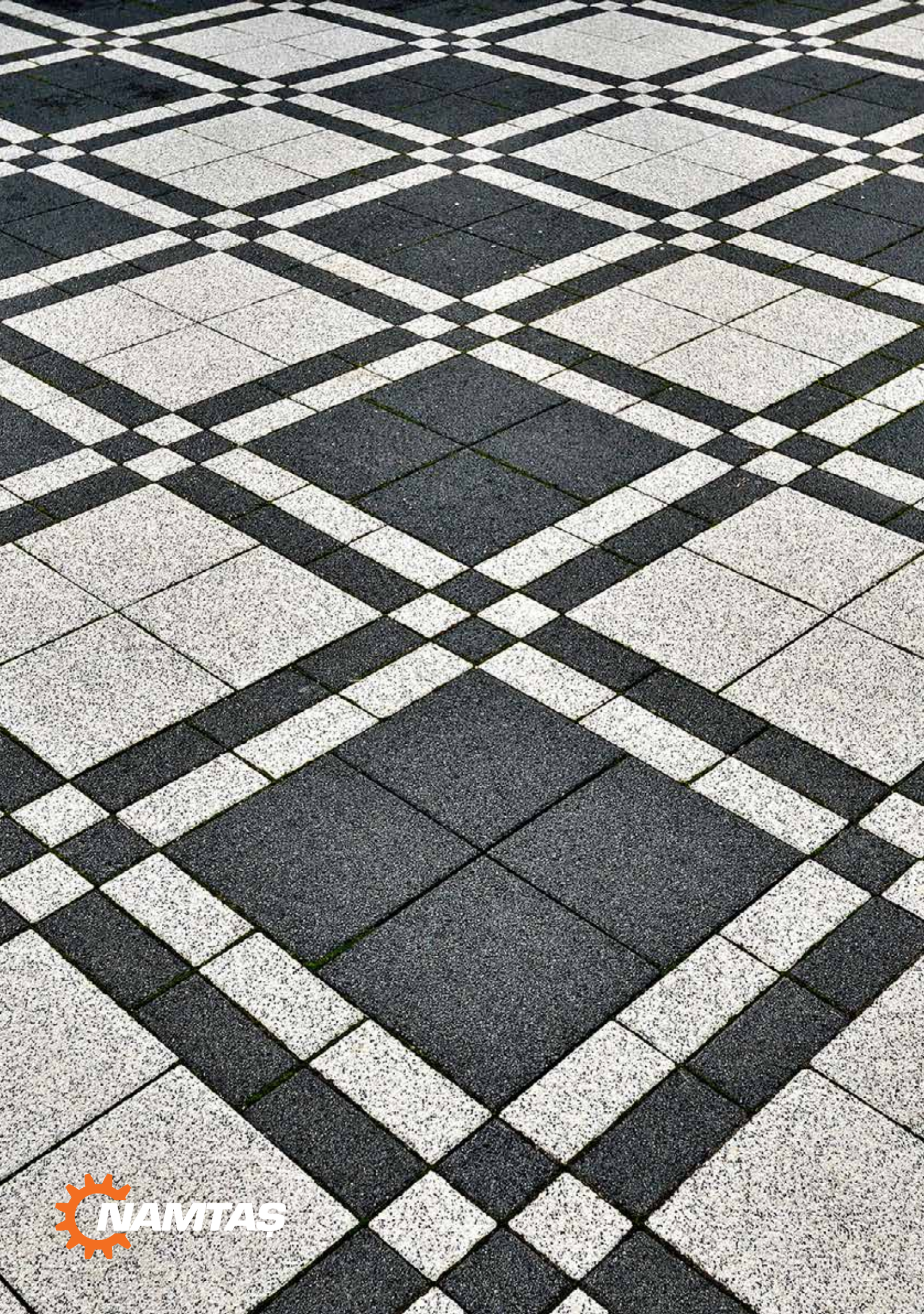


## PARKE TAŐI | PAVING STONE

Ürün Kodu <i>Product Code</i>	Ölçüler (mm) <i>Dimensions (mm)</i>	Birim Alan (dm <sup>2</sup> ) <i>Unit Area (dm<sup>2</sup>)</i>	Adet / (m <sup>2</sup> ) <i>Unit / (m<sup>2</sup>)</i>
K1180	150 x 129,9	1,95	51,3



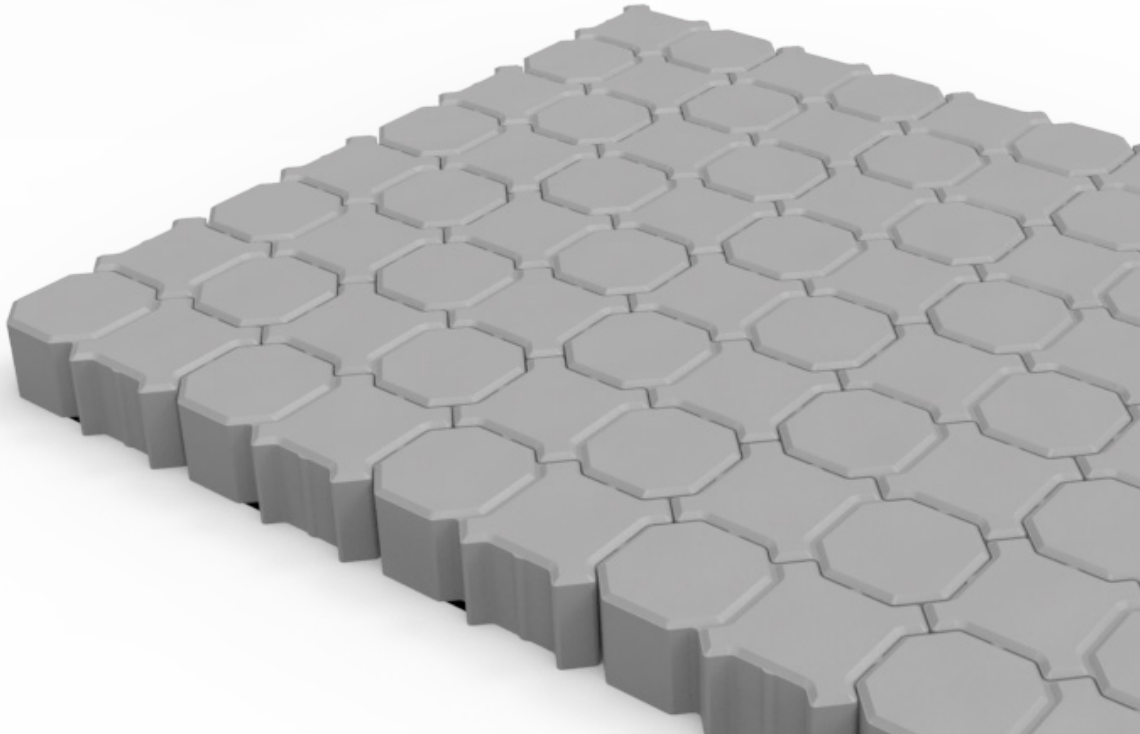
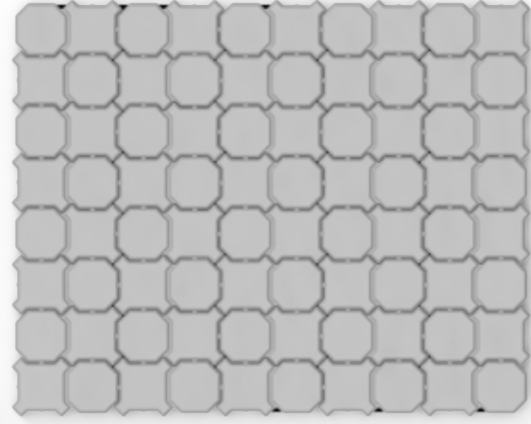
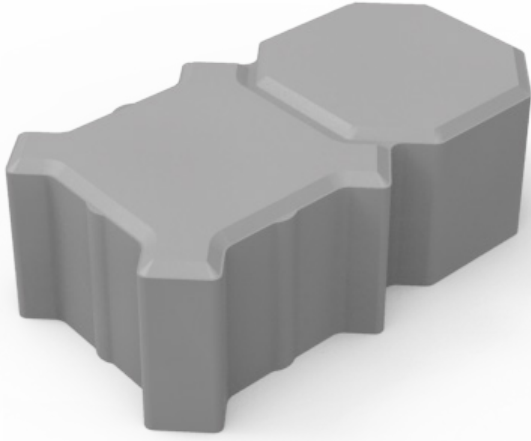






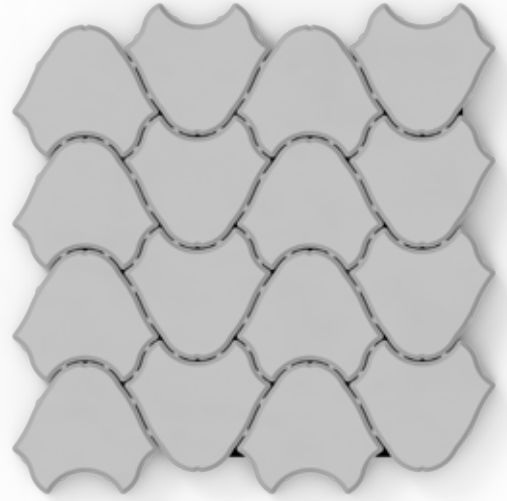
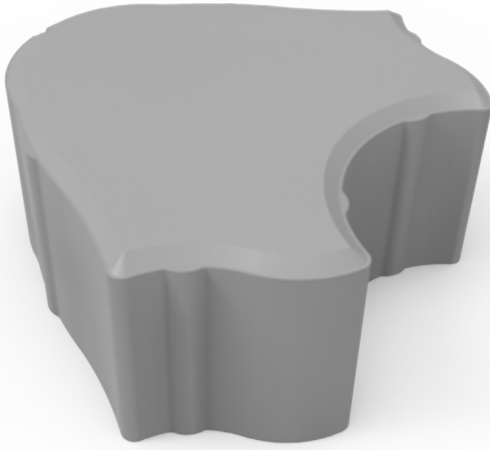
## PARKE TAŐI / PAVING STONE

Ürün Kodu <i>Product Code</i>	Ölçüler (mm) <i>Dimensions (mm)</i>	Birim Alan (dm <sup>2</sup> ) <i>Unit Area (dm<sup>2</sup>)</i>	Adet / (m <sup>2</sup> ) <i>Unit / (m<sup>2</sup>)</i>
K1190	230 x 110	2,53	39,5



## PARKE TAŐI | PAVING STONE

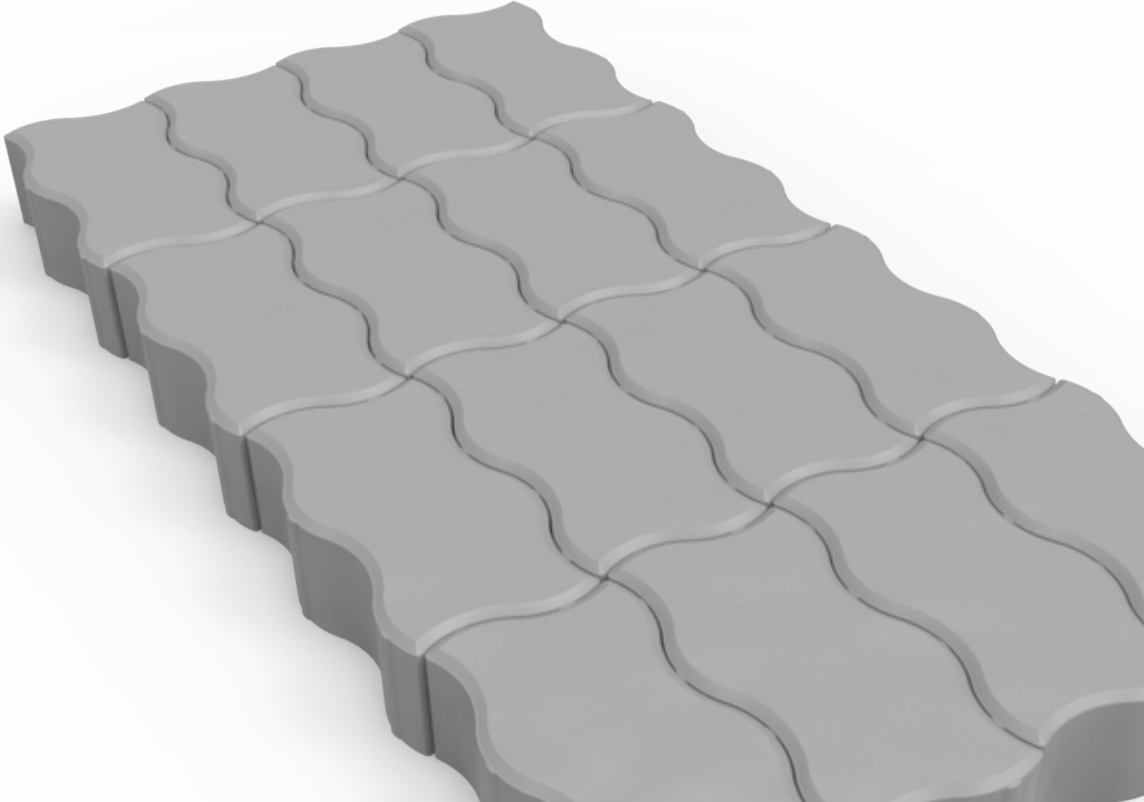
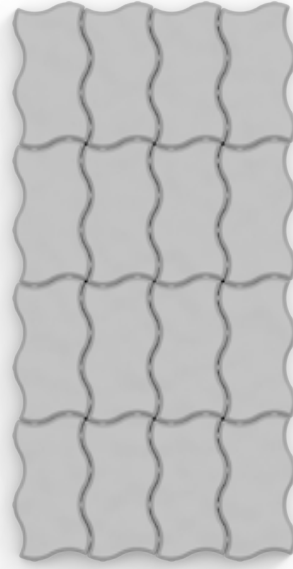
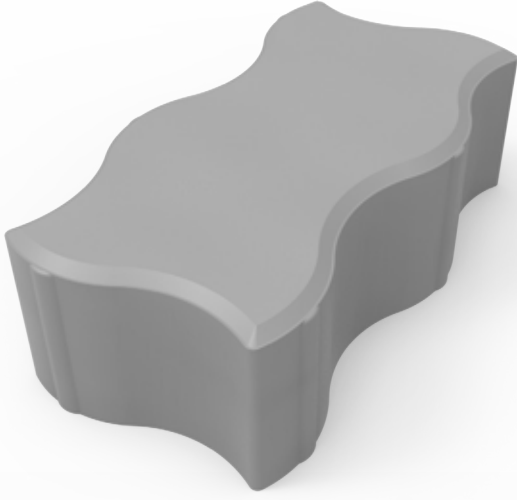
Ürün Kodu <i>Product Code</i>	Ölçüler (mm) <i>Dimensions (mm)</i>	Birim Alan (dm <sup>2</sup> ) <i>Unit Area (dm<sup>2</sup>)</i>	Adet / (m <sup>2</sup> ) <i>Unit / (m<sup>2</sup>)</i>
K1200	147 x 147	2,16	46,3





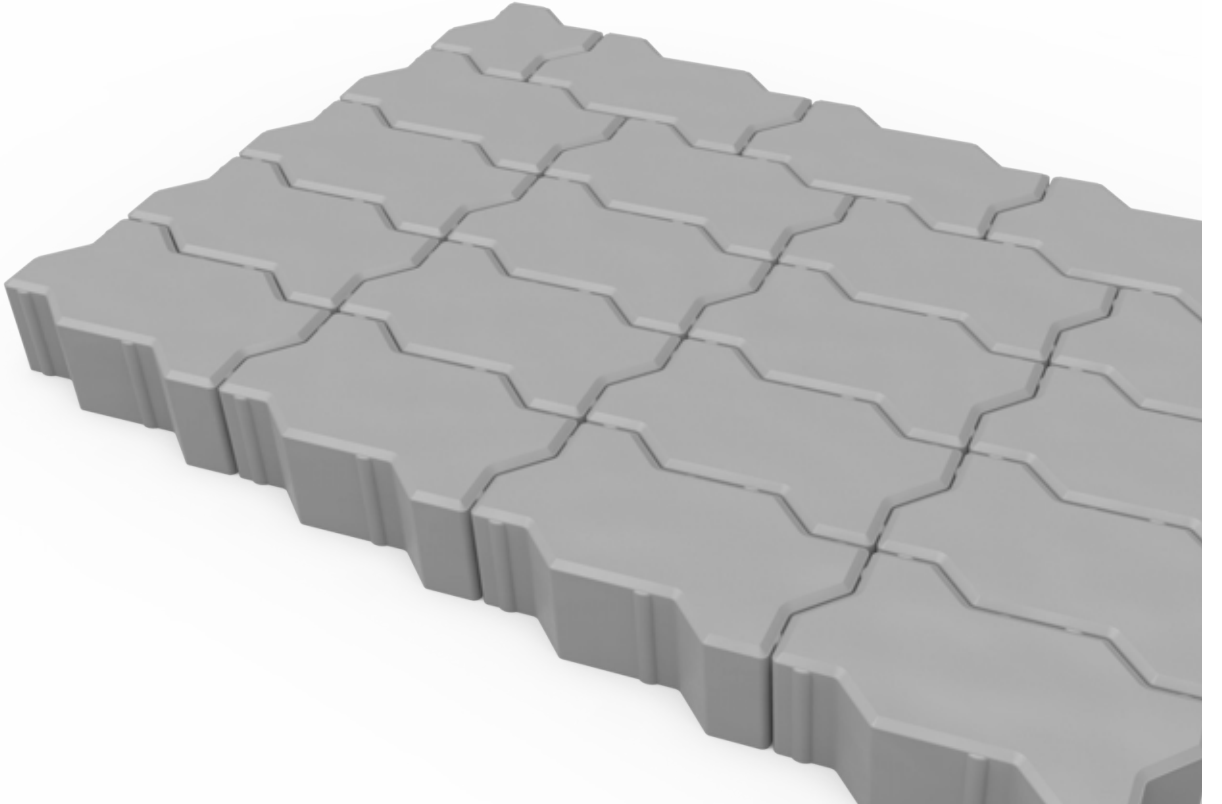
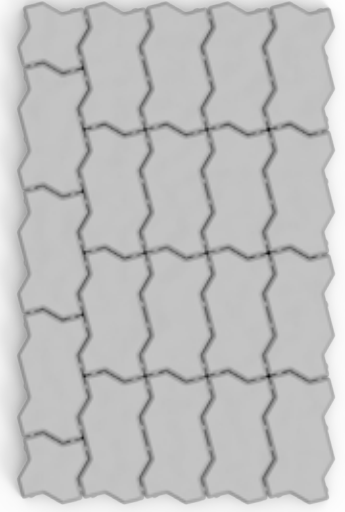
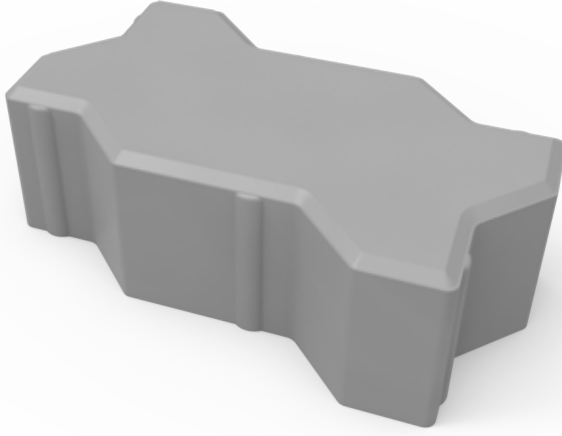
## PARKE TAŐI / PAVING STONE

Ürün Kodu <i>Product Code</i>	Ölçüler (mm) <i>Dimensions (mm)</i>	Birim Alan (dm <sup>2</sup> ) <i>Unit Area (dm<sup>2</sup>)</i>	Adet / (m <sup>2</sup> ) <i>Unit / (m<sup>2</sup>)</i>
K1210	240 x 120	2,88	34,7



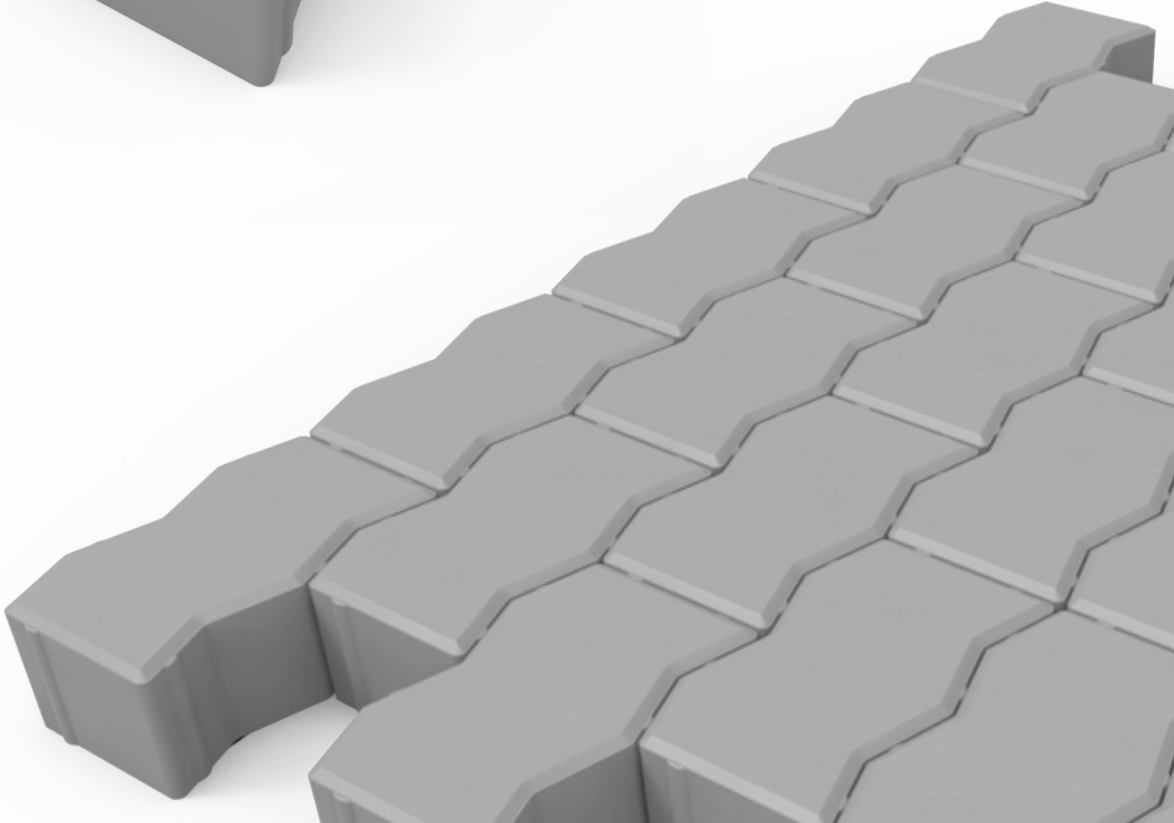
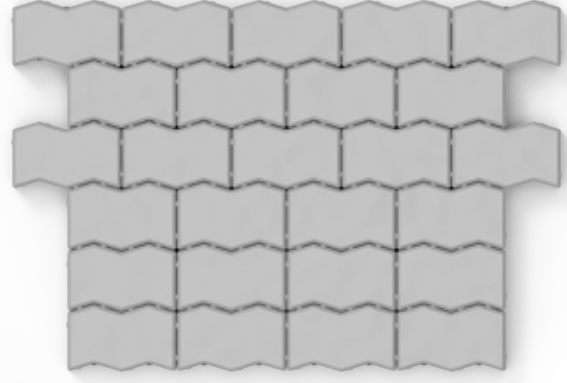
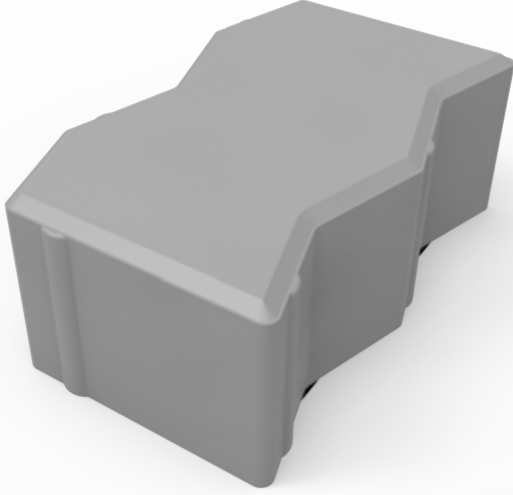
## PARKE TAŐI | PAVING STONE

Ürün Kodu <i>Product Code</i>	Ölçüler (mm) <i>Dimensions (mm)</i>	Birim Alan (dm <sup>2</sup> ) <i>Unit Area (dm<sup>2</sup>)</i>	Adet / (m <sup>2</sup> ) <i>Unit / (m<sup>2</sup>)</i>
K1211	225 x 112,5	2,53	39,5



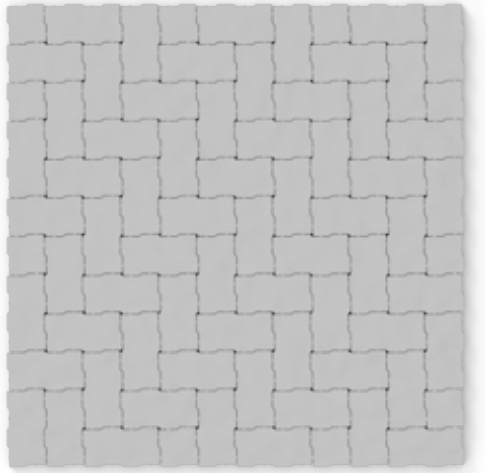
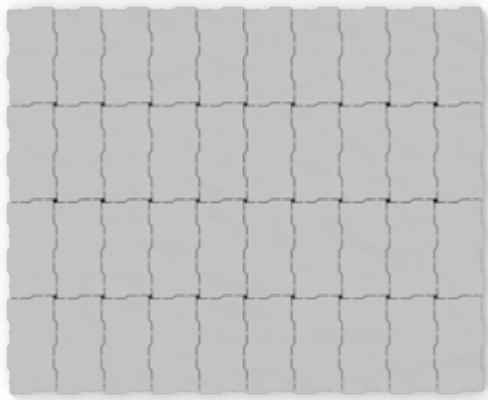
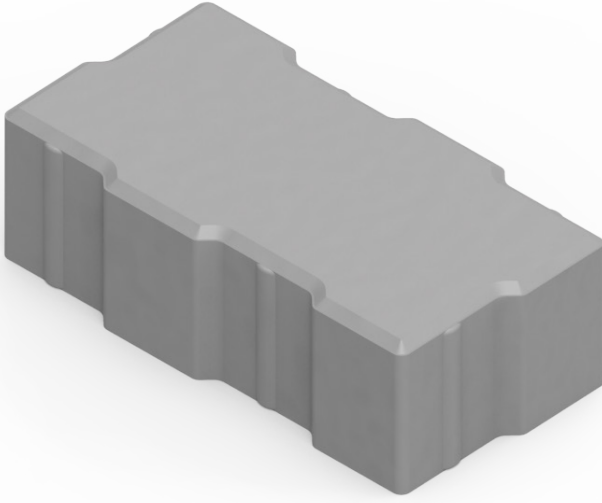
## PARKE TAŐI | PAVING STONE

Ürün Kodu <i>Product Code</i>	Ölçüler (mm) <i>Dimensions (mm)</i>	Birim Alan (dm <sup>2</sup> ) <i>Unit Area (dm<sup>2</sup>)</i>	Adet / (m <sup>2</sup> ) <i>Unit / (m<sup>2</sup>)</i>
K1212	200 x 125	2,50	40



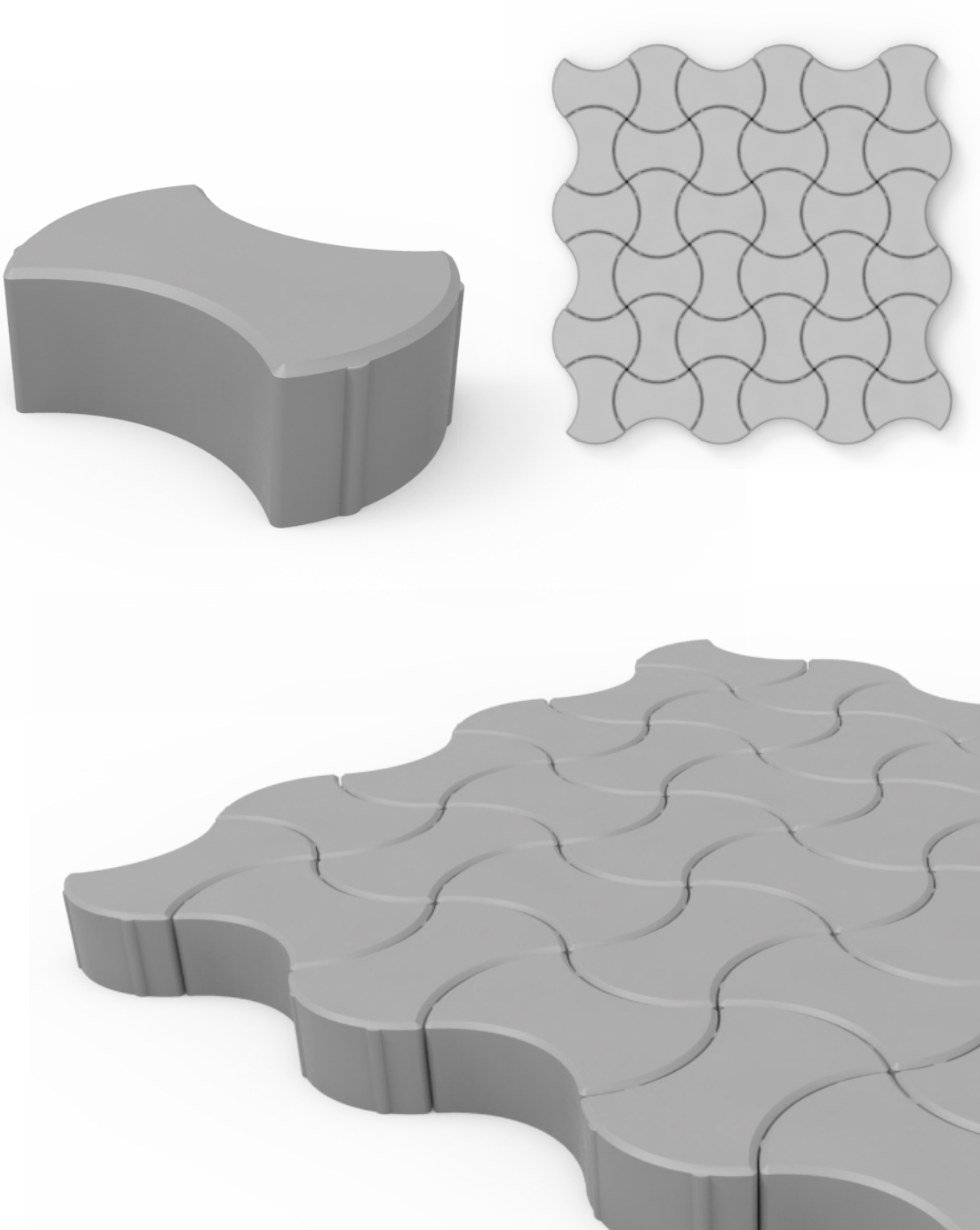
## PARKE TAŐI | PAVING STONE

Ürün Kodu <i>Product Code</i>	Ölçüler (mm) <i>Dimensions (mm)</i>	Birim Alan (dm <sup>2</sup> ) <i>Unit Area (dm<sup>2</sup>)</i>	Adet / (m <sup>2</sup> ) <i>Unit / (m<sup>2</sup>)</i>
K1215	250 x 125	3,13	32



## PARKE TAŐI | PAVING STONE

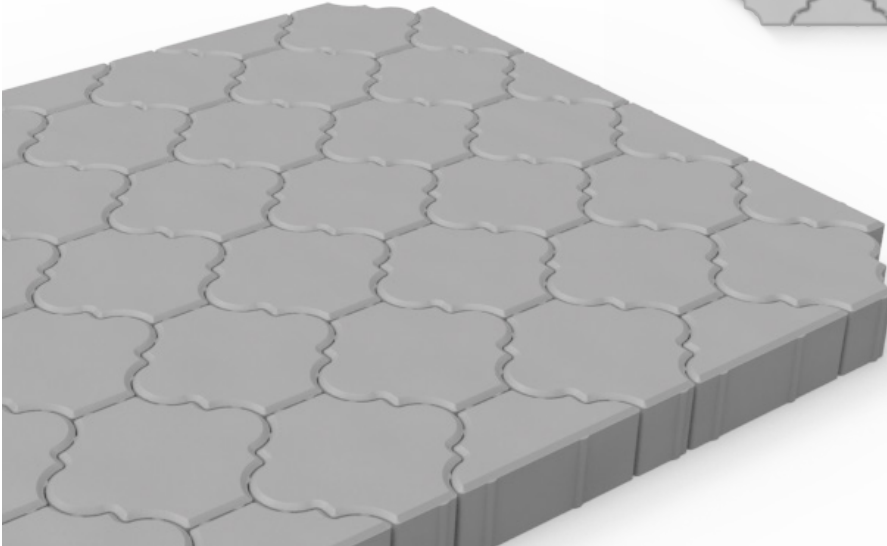
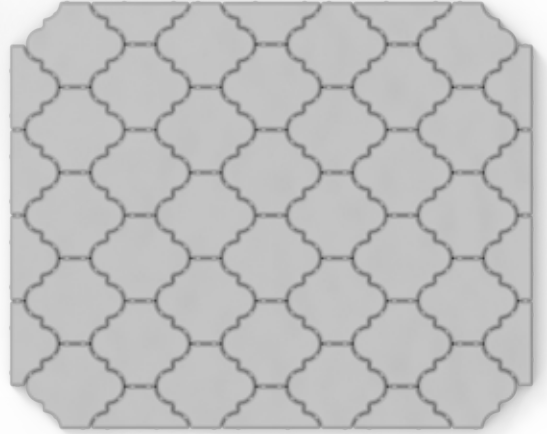
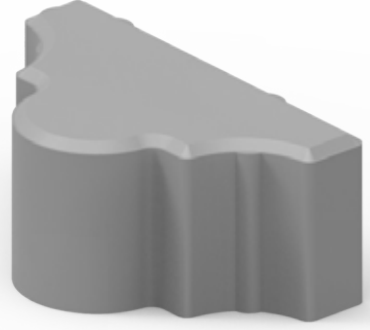
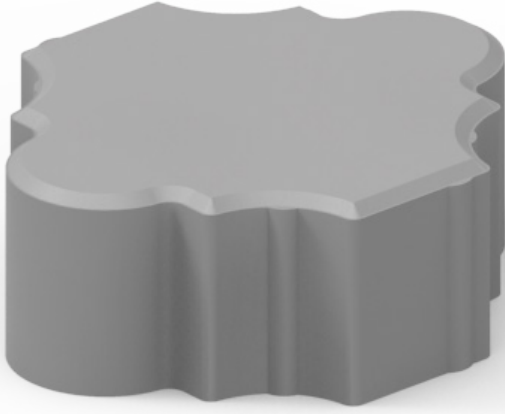
Ürün Kodu <i>Product Code</i>	Ölçüler (mm) <i>Dimensions (mm)</i>	Birim Alan (dm <sup>2</sup> ) <i>Unit Area (dm<sup>2</sup>)</i>	Adet / (m <sup>2</sup> ) <i>Unit / (m<sup>2</sup>)</i>
K1217	224 x 92	2,06	48,5





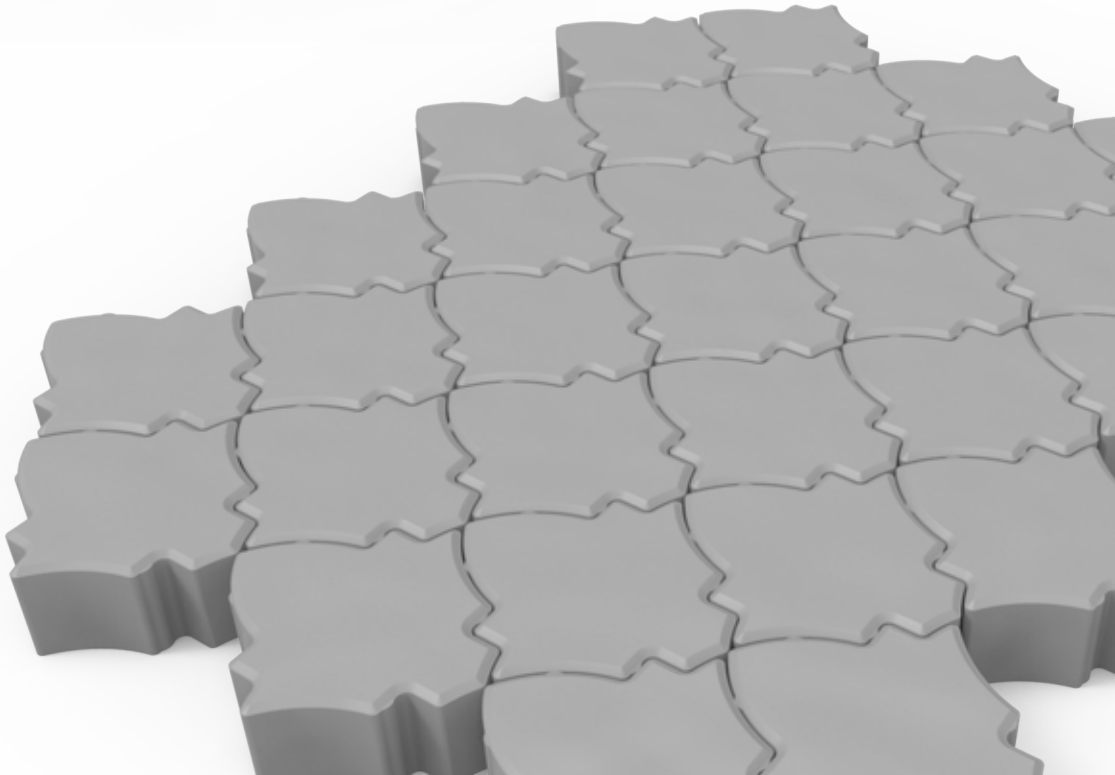
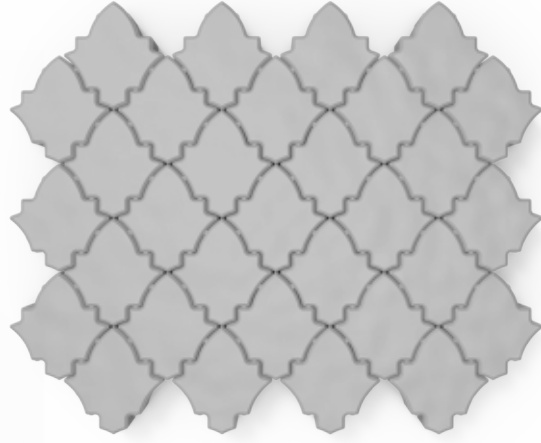
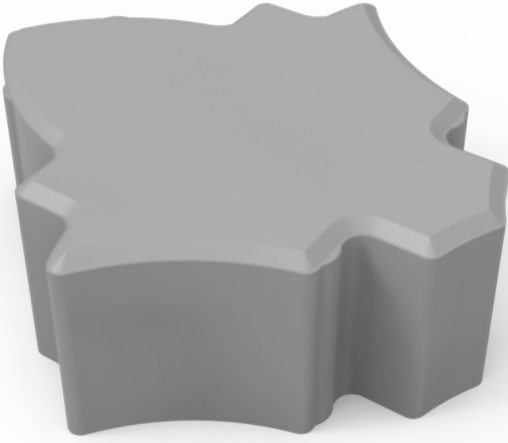
## PARKE TAŞI | PAVING STONE

Ürün Kodu <i>Product Code</i>	Ölçüler (mm) <i>Dimensions (mm)</i>	Birim Alan (dm <sup>2</sup> ) <i>Unit Area (dm<sup>2</sup>)</i>	Adet / (m <sup>2</sup> ) <i>Unit / (m<sup>2</sup>)</i>
K1250	240 x 120	2,88	34,7
K1251	240 x 60	1,44	69,4



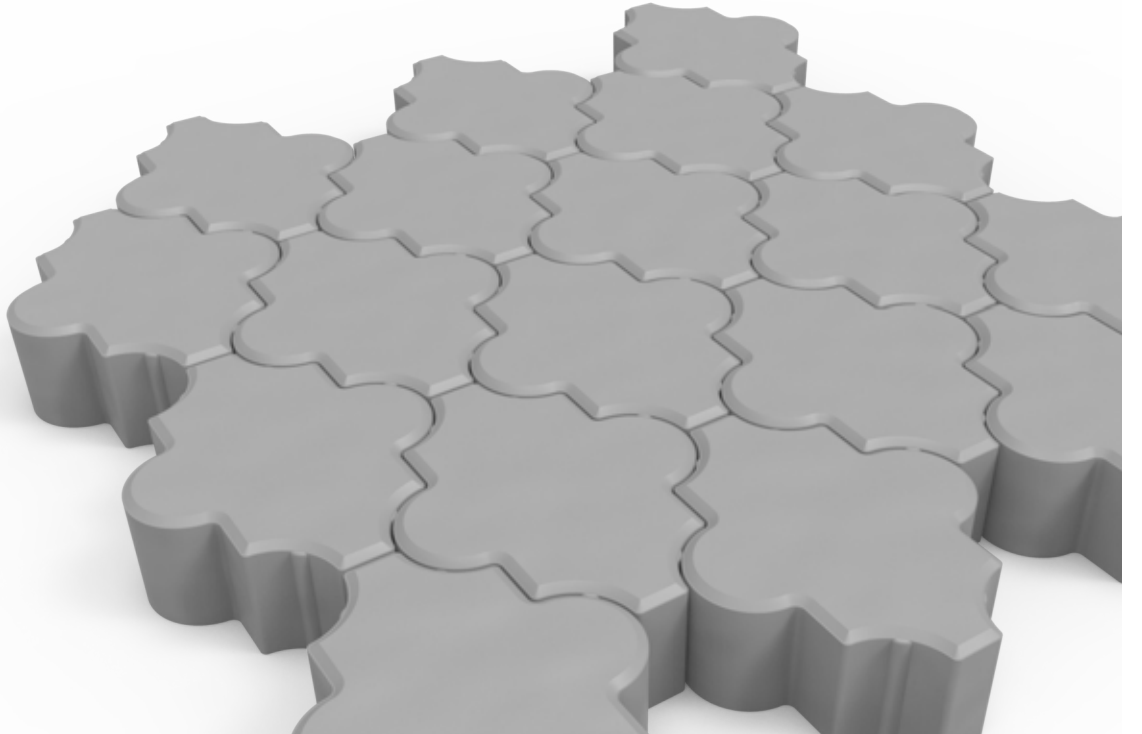
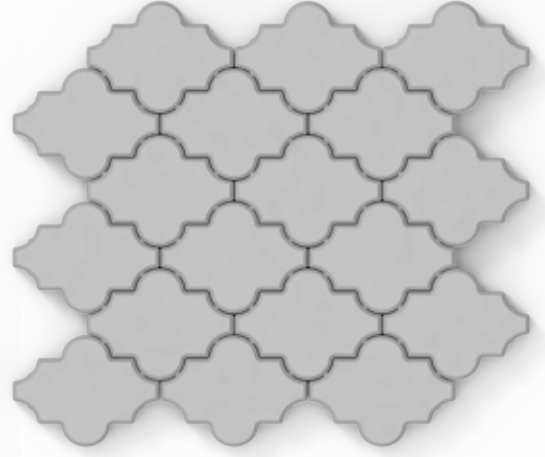
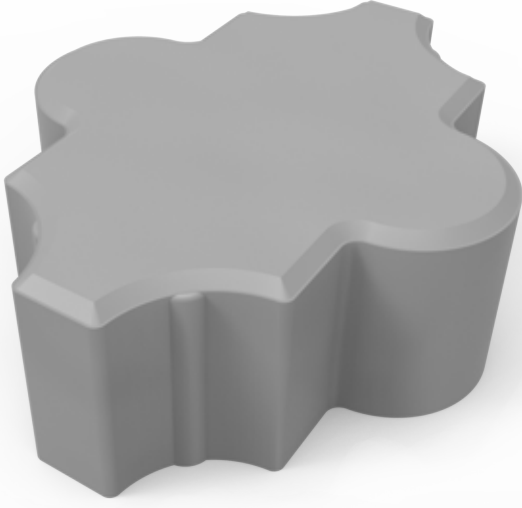
## PARKE TAŐI / PAVING STONE

Ürün Kodu <i>Product Code</i>	Ölçüler (mm) <i>Dimensions (mm)</i>	Birim Alan (dm <sup>2</sup> ) <i>Unit Area (dm<sup>2</sup>)</i>	Adet / (m <sup>2</sup> ) <i>Unit / (m<sup>2</sup>)</i>
K1252	224 x 112	2,51	39,9



## PARKE TAŐI | PAVING STONE

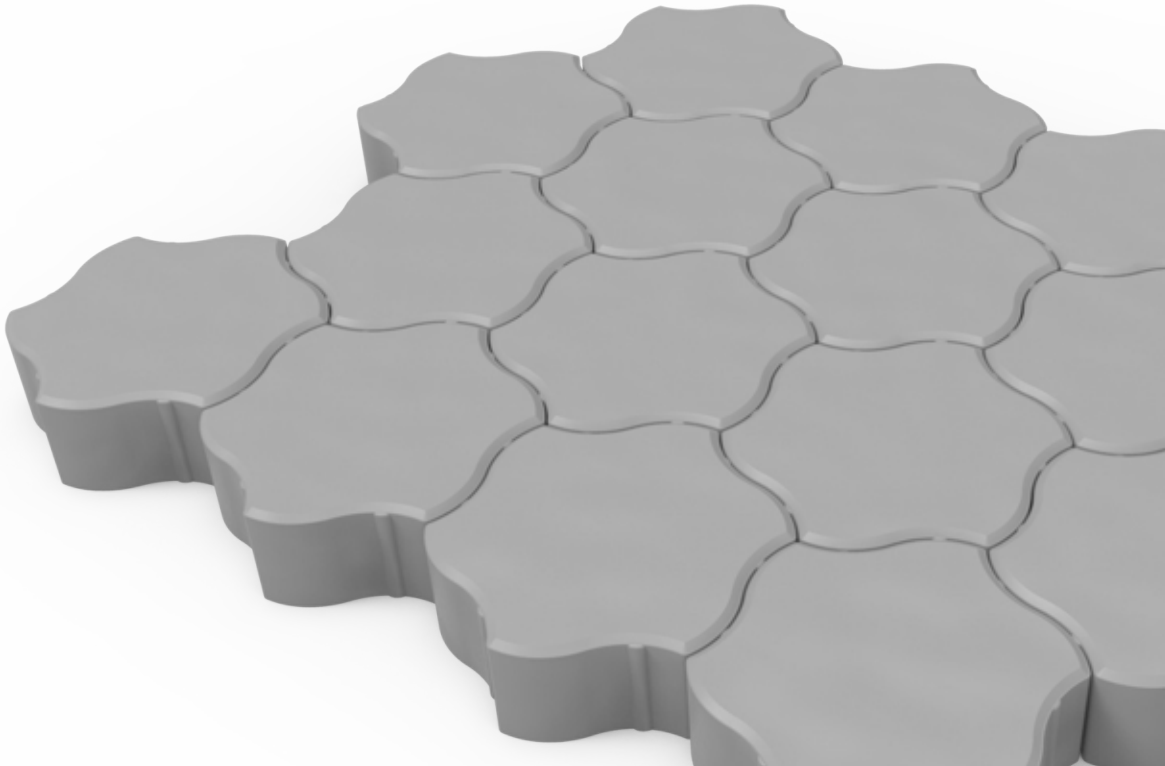
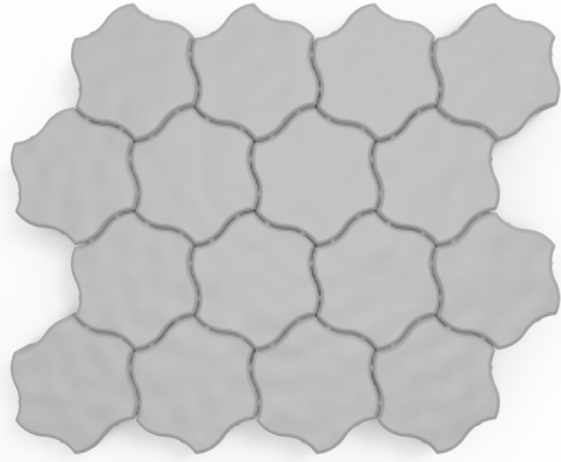
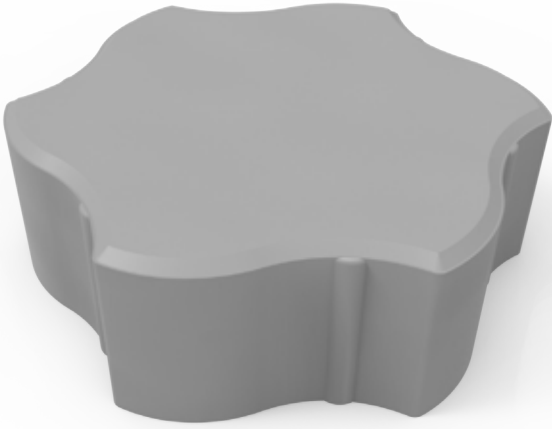
Ürün Kodu <i>Product Code</i>	Ölçüler (mm) <i>Dimensions (mm)</i>	Birim Alan (dm <sup>2</sup> ) <i>Unit Area (dm<sup>2</sup>)</i>	Adet / (m <sup>2</sup> ) <i>Unit / (m<sup>2</sup>)</i>
K1253	233 x 192	4,47	22,3





## PARKE TAŐI / PAVING STONE

Ürün Kodu <i>Product Code</i>	Ölçüler (mm) <i>Dimensions (mm)</i>	Birim Alan (dm <sup>2</sup> ) <i>Unit Area (dm<sup>2</sup>)</i>	Adet / (m <sup>2</sup> ) <i>Unit / (m<sup>2</sup>)</i>
K1254	207,8 x 180	3,74	26,7



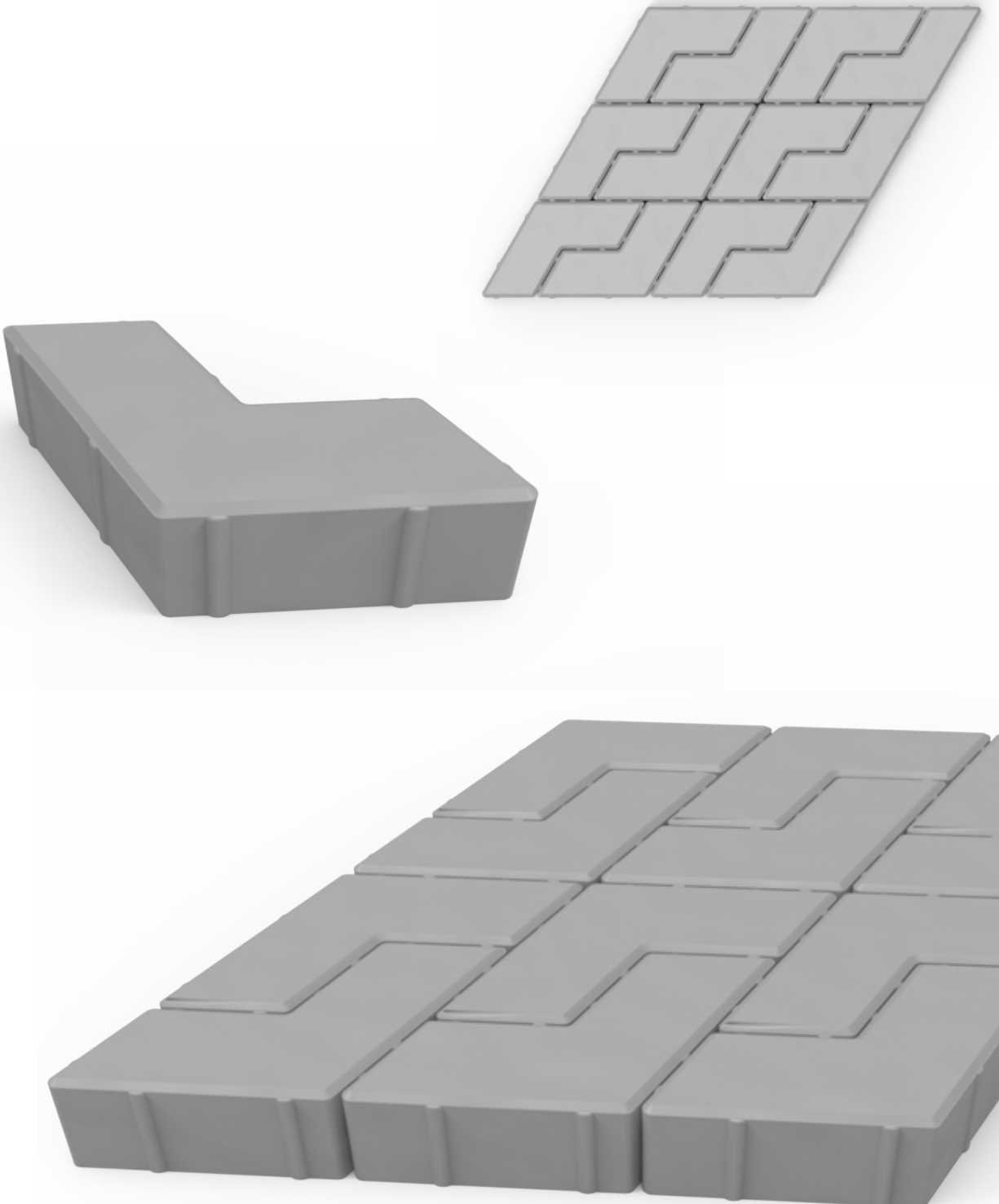






## PARKE TAŐI | PAVING STONE

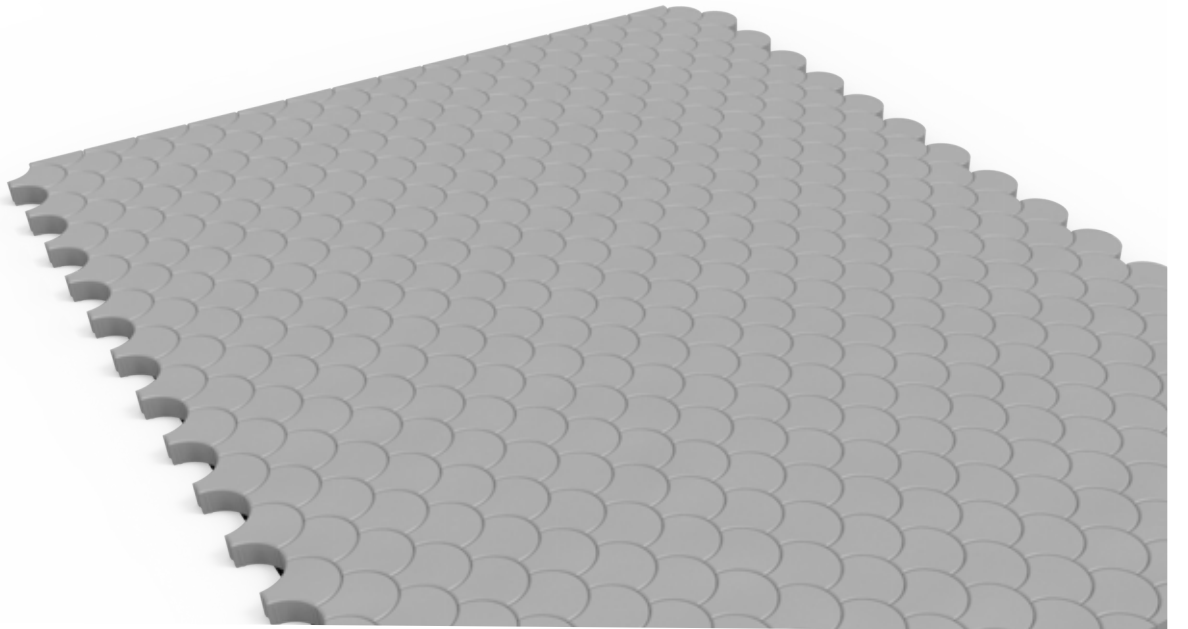
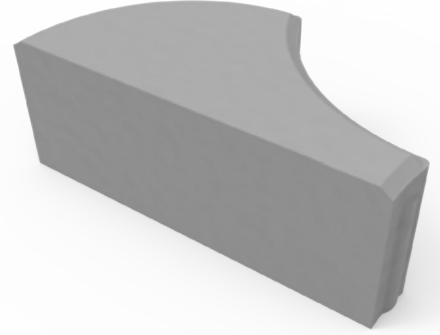
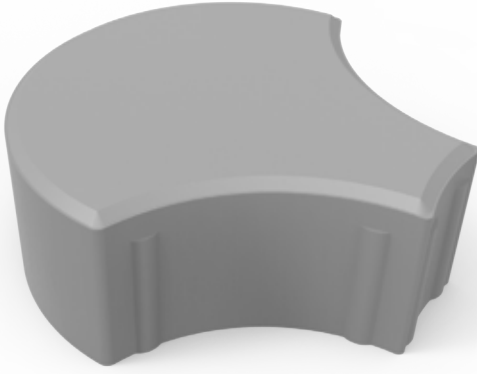
Ürün Kodu <i>Product Code</i>	Ölçüler (mm) <i>Dimensions (mm)</i>	Birim Alan (dm <sup>2</sup> ) <i>Unit Area (dm<sup>2</sup>)</i>	Adet / (m <sup>2</sup> ) <i>Unit / (m<sup>2</sup>)</i>
K1260	200/100 x 200/100	2,60	38,5





## PARKE TAŐI | PAVING STONE

Ürün Kodu <i>Product Code</i>	Ölçüler (mm) <i>Dimensions (mm)</i>	Birim Alan (dm <sup>2</sup> ) <i>Unit Area (dm<sup>2</sup>)</i>	Adet / (m <sup>2</sup> ) <i>Unit / (m<sup>2</sup>)</i>
K1300	210 x 136	2,86	35
K1301	210 x 68	1,42	70



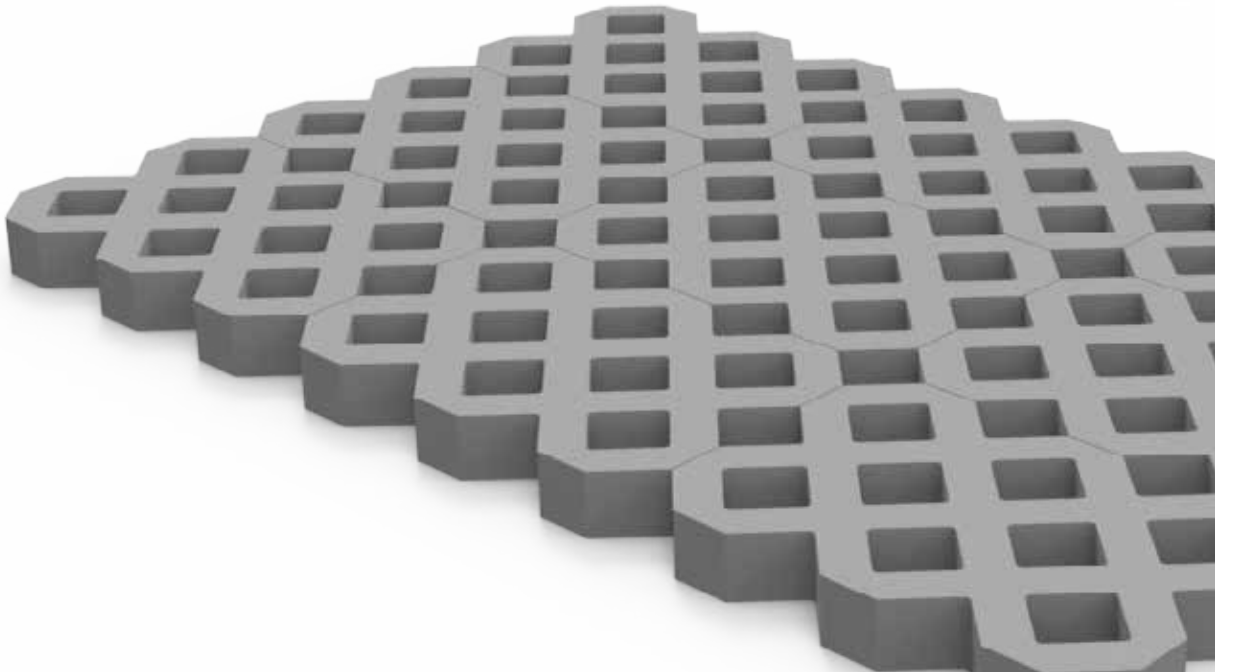






## PARKE TAŐI | PAVING STONE

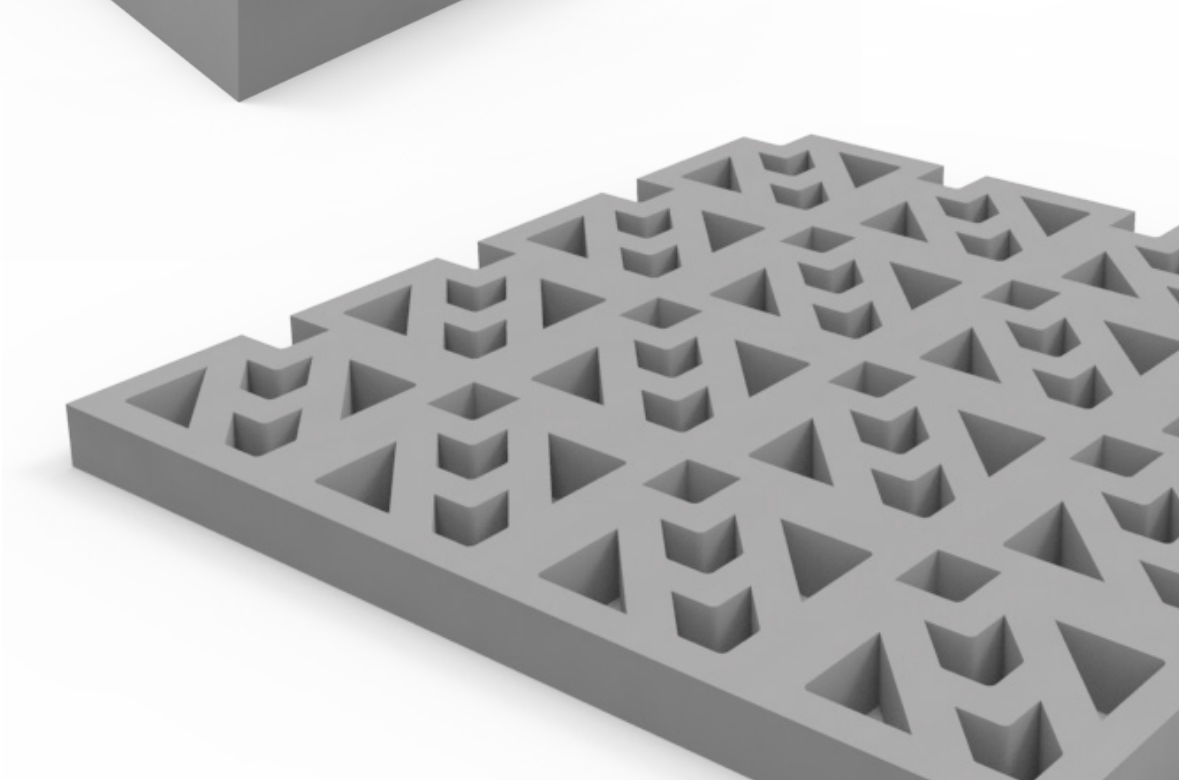
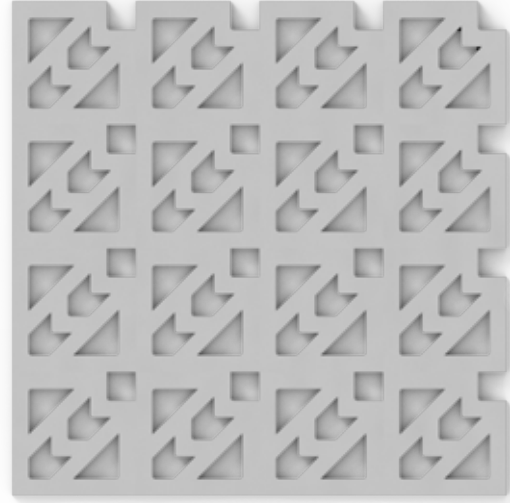
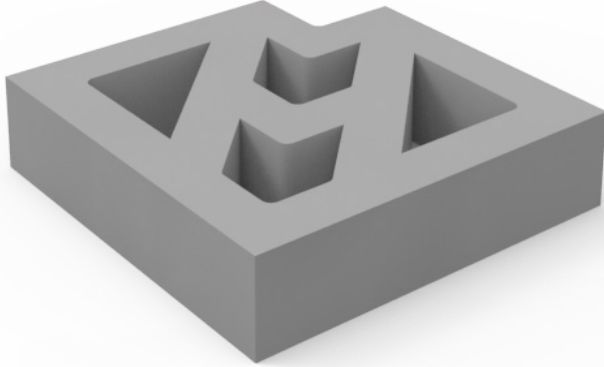
Ürün Kodu <i>Product Code</i>	Ölçüler (mm) <i>Dimensions (mm)</i>	Birim Alan (dm <sup>2</sup> ) <i>Unit Area (dm<sup>2</sup>)</i>	Adet / (m <sup>2</sup> ) <i>Unit / (m<sup>2</sup>)</i>
K1500	400 x 400	9,00	11,1
K1510	400 x 600	9,00	11,1



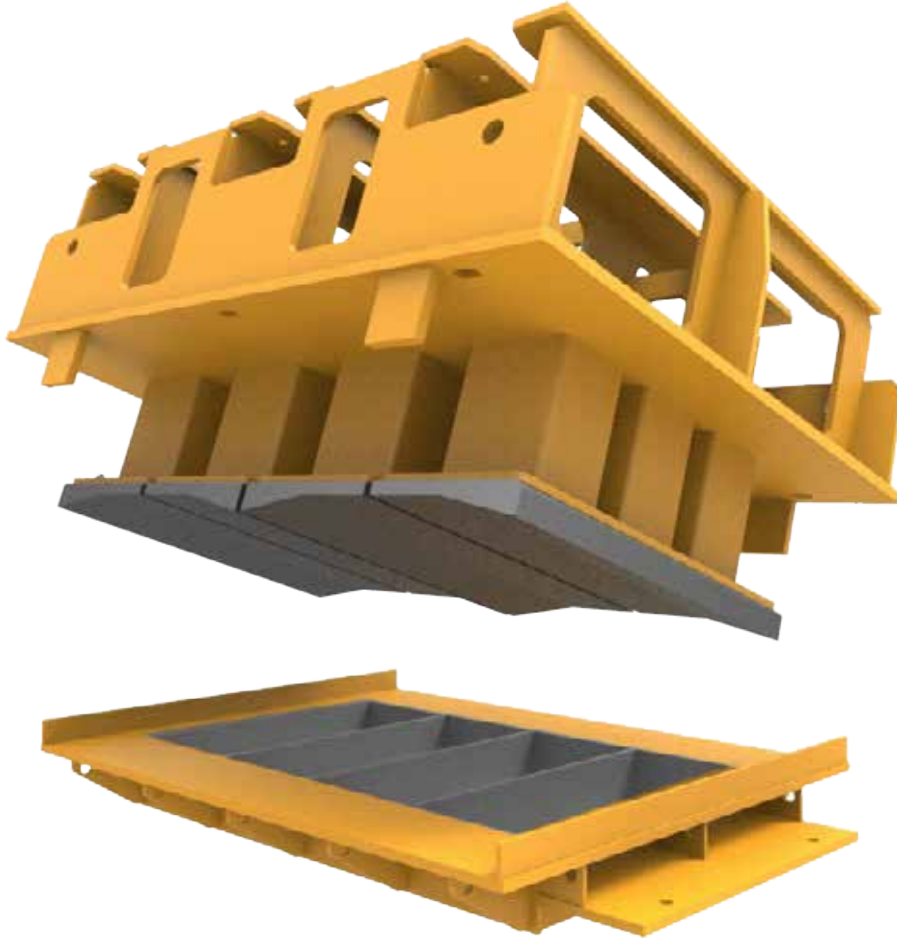


## PARKE TAŐI | PAVING STONE

Ürün Kodu <i>Product Code</i>	Ölçüler (mm) <i>Dimensions (mm)</i>	Birim Alan (dm <sup>2</sup> ) <i>Unit Area (dm<sup>2</sup>)</i>	Adet / (m <sup>2</sup> ) <i>Unit / (m<sup>2</sup>)</i>
K1520	200 x 200	4,00	25



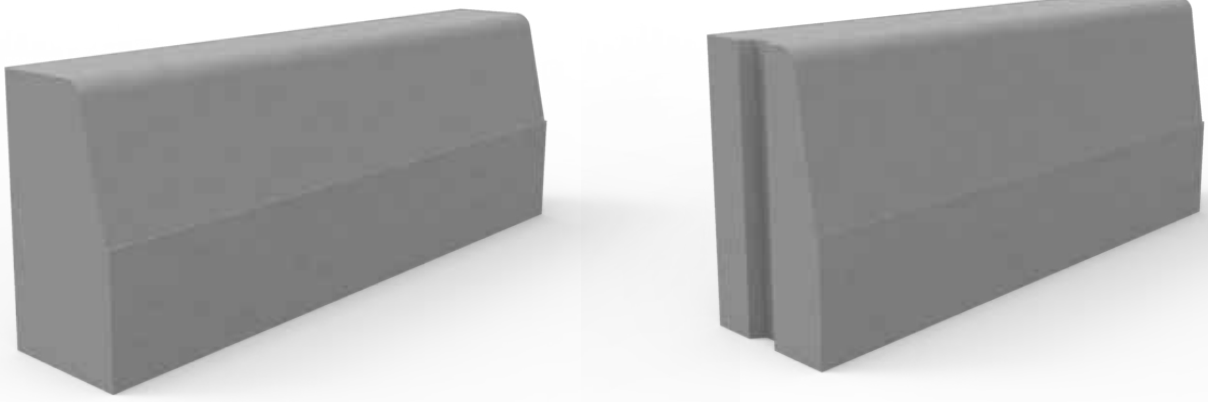
## BORDÜR / CURBSTONE



Yaya kaldırımları, yürüyüş yolları ve refüjleri yollardan ayırmak için kullanılan bordür taşları yayalar ve araçlar arasında güvenli bölge oluşturmaktadır. NAMTAŞ beton bordür kalıpları bu amaç doğrultusunda müşterilerinin ihtiyaçlarına yönelik boyutlandırılıp, tasarlanmaktadır.

*Curbstones which are used for separating the sidewalks, walking paths and traffic islands from the main road, provide safety zone between pedestrians and vehicles. Namtaş curbstone molds are dimensioned and designed intended for the aforementioned aim of the customers' needs.*

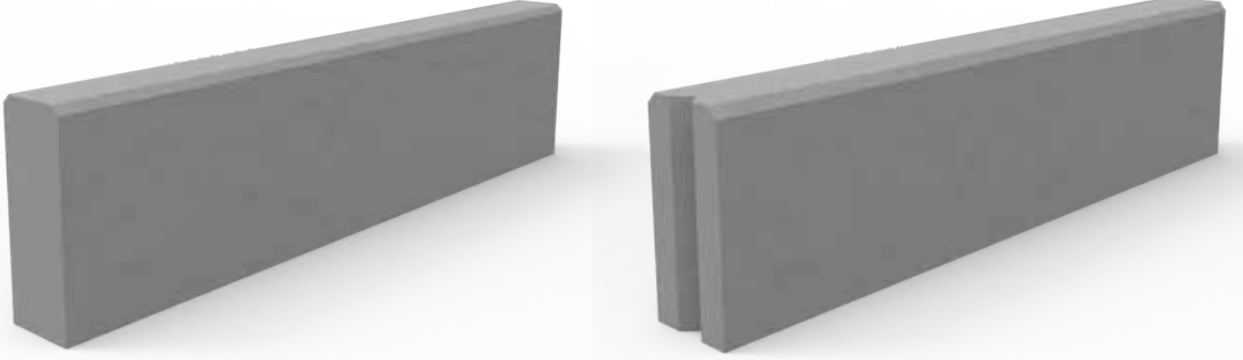




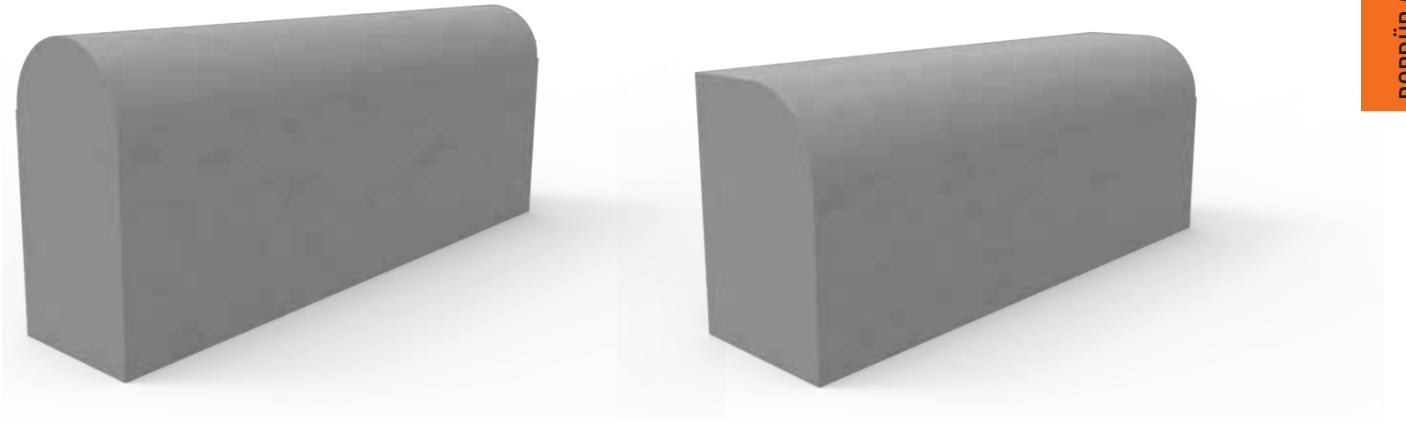
Ürün Kodu <i>Product Code</i>	Ölçüler (mm) <i>Dimensions (mm)</i>	Ağırlık (kg / m <sup>2</sup> ) <i>Weight (kg / m<sup>2</sup>)</i>
K4010	50/100 x 150 x 500 (750-1000)	26
K4020	70/100 x 200 x 500 (750-1000)	39
K4030	100/130 x 250 x 500 (750-1000)	66
K4040	120/150 x 300 x 500 (750-1000)	93
K4050	150/180 x 300 x 500 (750-1000)	114
K4060	150/300 x 300 x 500 (750-1000)	155



## BORDÜR | CURBSTONE



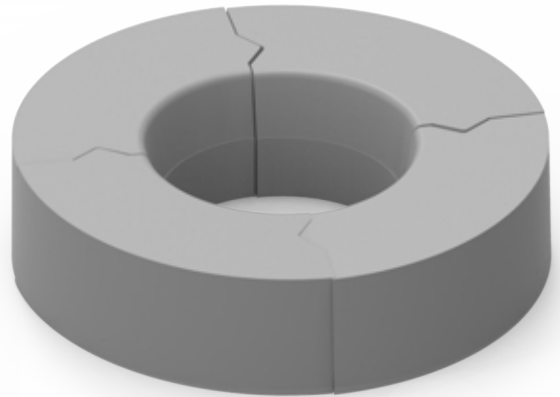
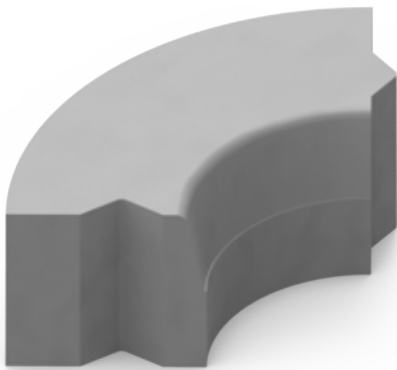
Ürün Kodu <i>Product Code</i>	Ölçüler (mm) <i>Dimensions (mm)</i>	Ağırlık (kg / m <sup>2</sup> ) <i>Weight (kg / m<sup>2</sup>)</i>
K4510	75 x 150 x 500 (750-1000)	26
K4520	100 x 200 x 500 (750-1000)	46
K4530	125 x 250 x 500 (750-1000)	72
K4540	150 x 300 x 500 (750-1000)	104



Ürün Kodu	Ölçüler (mm)	Ağırlık (kg / m <sup>2</sup> )
<i>Product Code</i>	<i>Dimensions (mm)</i>	<i>Weight (kg / m<sup>2</sup>)</i>
K4710	75 x 150 x 500 (750-1000)	25
K4720	100 x 200 x 500 (750-1000)	44
K4730	125 x 250 x 500 (750-1000)	68
K4740	150 x 300 x 500 (750-1000)	98

## BORDÜR | CURBSTONE

Ürün Kodu <i>Product Code</i>	Ölçüler (mm) <i>Dimensions (mm)</i>	Açıklamalar <i>Comments</i>
K4810	240 x 260 x 664	ölçüler müşteri ihtiyaçlarına göre değişiklik gösterebilir <i>dimensions can be varied according to the customers' needs</i>









## BETON / BİMS BLOK / HOLLOW BLOCKS



İnşaat sektöründe yaygın olarak kullanılan briket ve bims blokların ölçülendirilmesi ülkelere, bölgelere ve kullanım alanlarına göre farklılık göstermektedir.

NAMTAŞ yüksek kalite ve geniş çeşitlilikte ürün yelpazesıyla müşterilerine uygun çözümlerle, talep edilen briket bloklarının kalıplarını sunar.

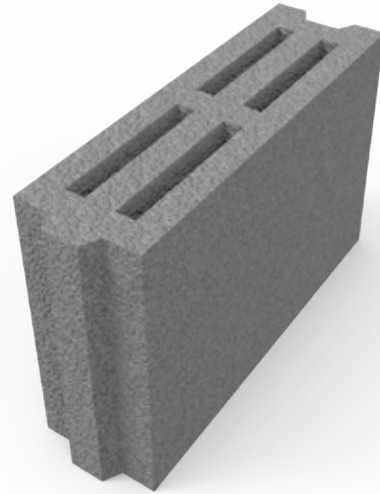
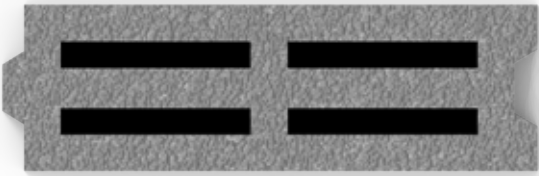
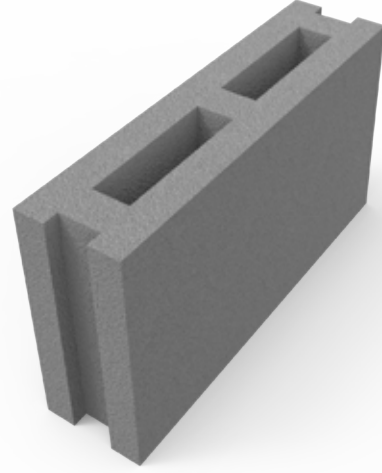
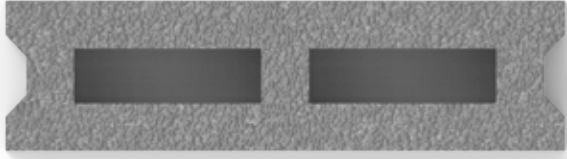
*The dimensioning of the hollow blocks that are used widely in building sector differs according to the countries, regions and usage areas.*

*Namtaş offers the requested hollow blocks' molds with high quality and the wide variety of product range that appropriates solutions to the customers.*



## BETON / BİMS BLOK / HOLLOW BLOCKS

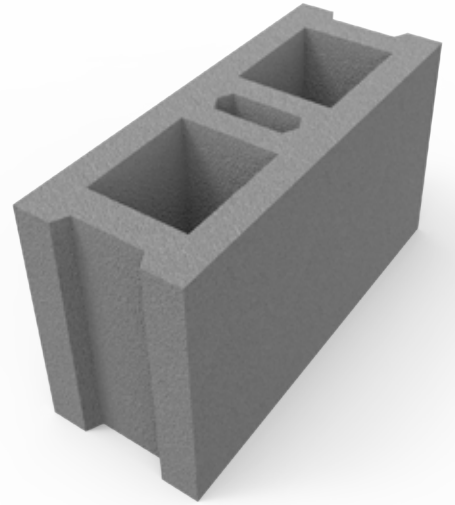
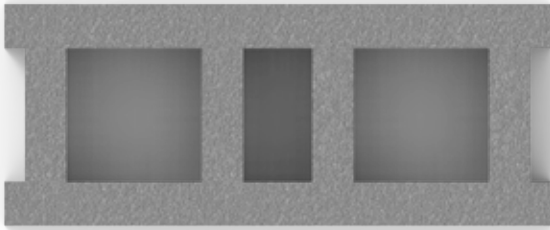
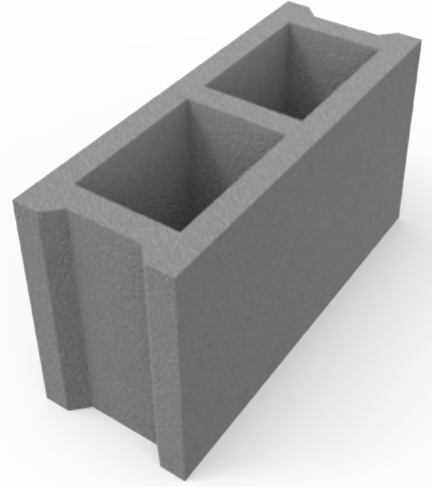
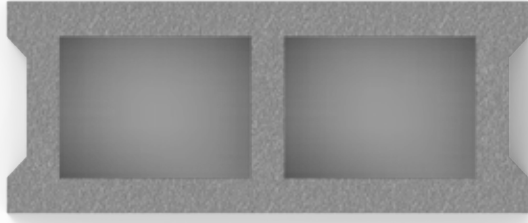
Ürün Kodu <i>Product Code</i>	Ölçüler (mm) <i>Dimensions (mm)</i>	Açıklamalar <i>Comments</i>
K6010	100 x 400 x 200	altı kapalı veya açık / geçmeli veya harçlı <i>bottom closed or open / interlaced or mortared</i>
K6012	100 x 400 x 200	





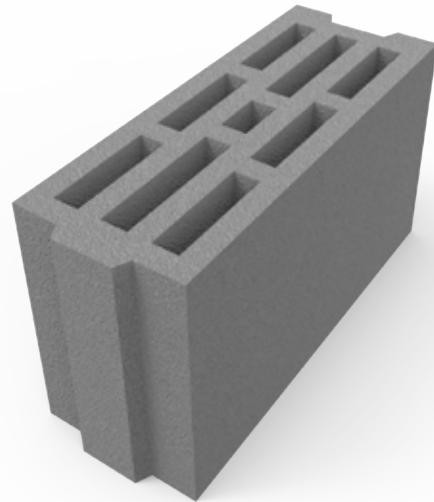
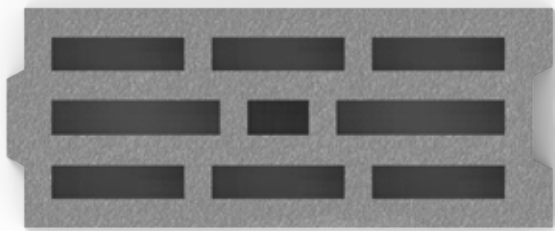
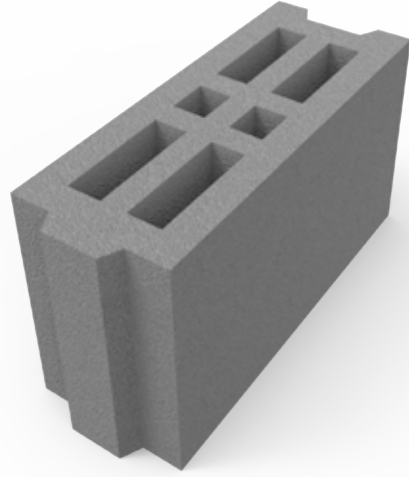
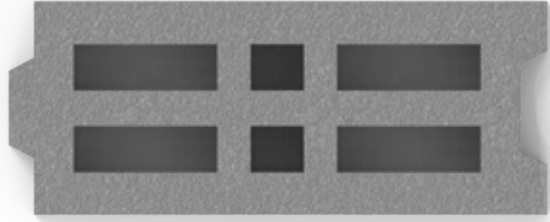
## BETON / BİMS BLOK / *HOLLOW BLOCKS*

Ürün Kodu <i>Product Code</i>	Ölçüler (mm) <i>Dimensions (mm)</i>	Açıklamalar <i>Comments</i>
K6020	150 x 400 x 200	altı kapalı veya açık / geçmeli veya harçlı <i>bottom closed or open / interlaced or mortared</i>
K6021	150 x 400 x 200	



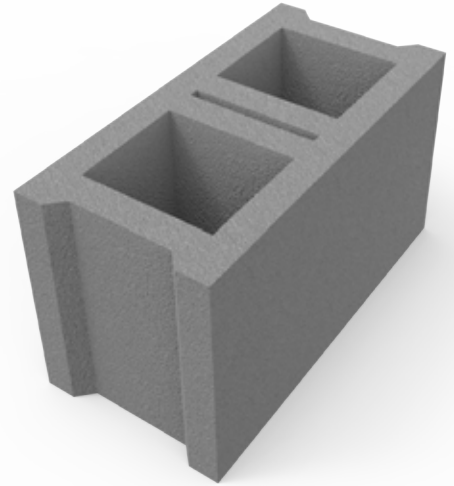
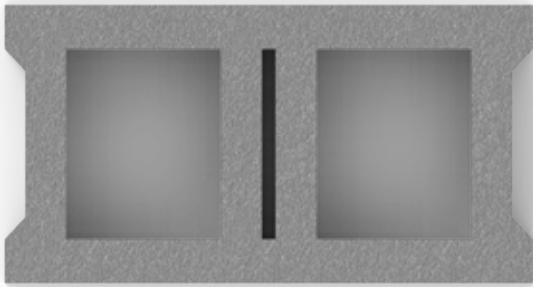
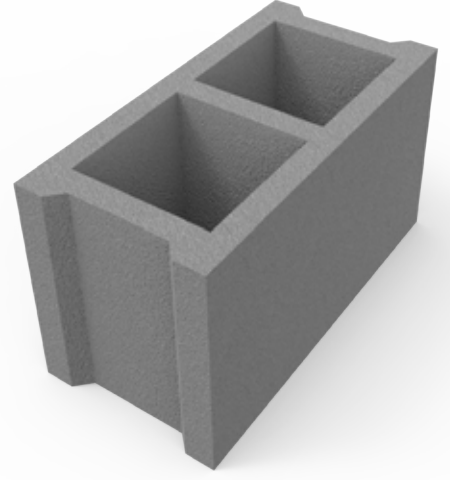
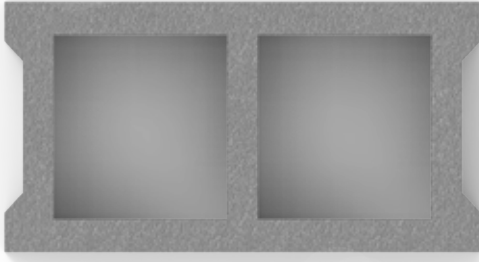
## BETON / BİMS BLOK / HOLLOW BLOCKS

Ürün Kodu <i>Product Code</i>	Ölçüler (mm) <i>Dimensions (mm)</i>	Açıklamalar <i>Comments</i>
K6023	150 x 400 x 200	altı kapalı veya açık / geçmeli veya harçlı <i>bottom closed or open / interlaced or mortared</i>
K6024	150 x 400 x 200	



## BETON / BİMS BLOK / *HOLLOW BLOCKS*

Ürün Kodu <i>Product Code</i>	Ölçüler (mm) <i>Dimensions (mm)</i>	Açıklamalar <i>Comments</i>
K6030	200 x 400 x 200	altı kapalı veya açık / geçmeli veya harçlı <i>bottom closed or open / interlaced or mortared</i>
K6031	200 x 400 x 200	



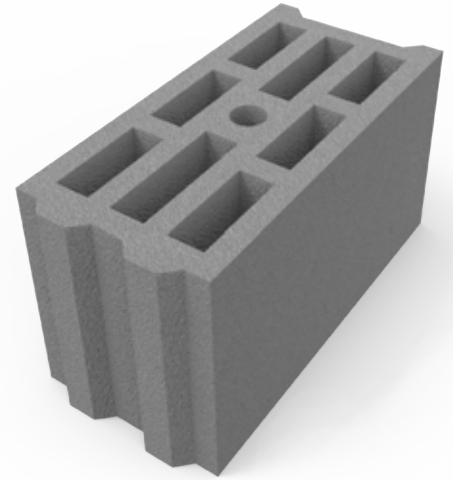
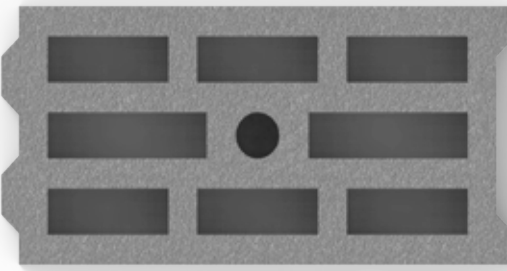
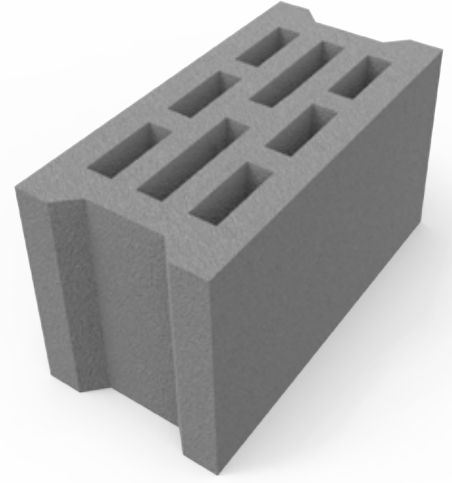
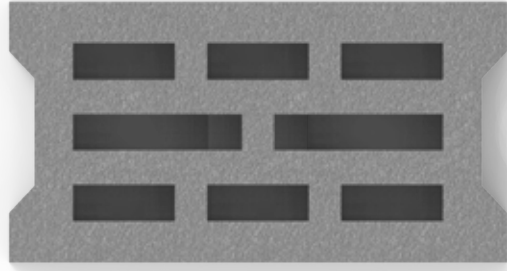






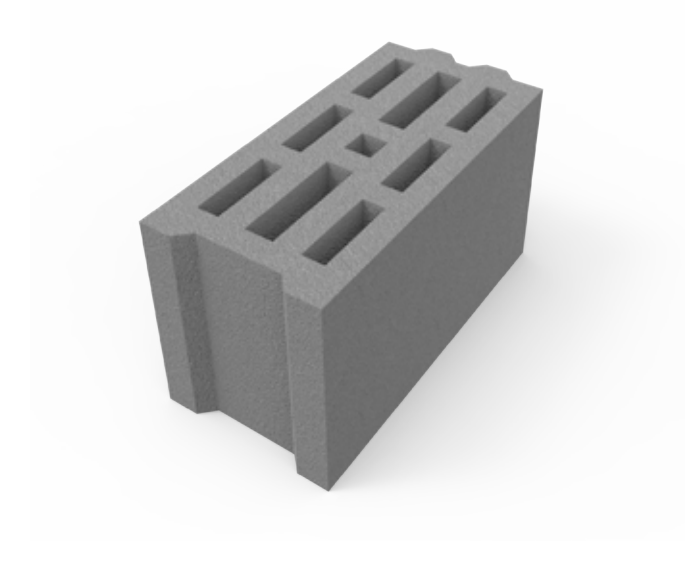
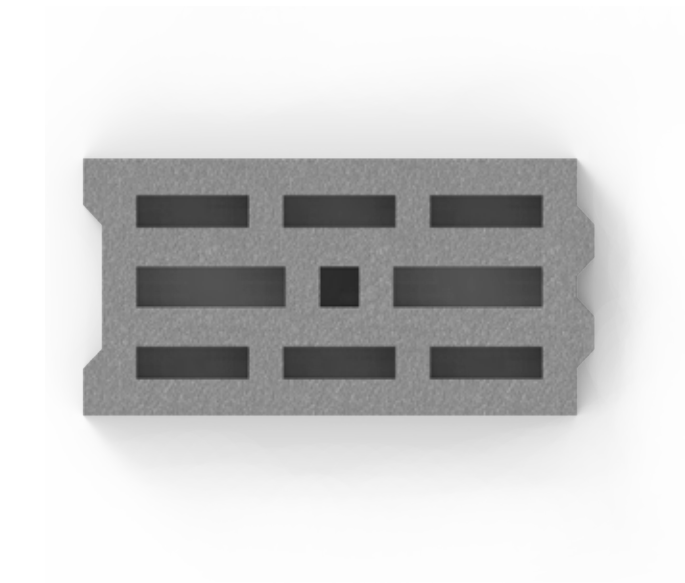
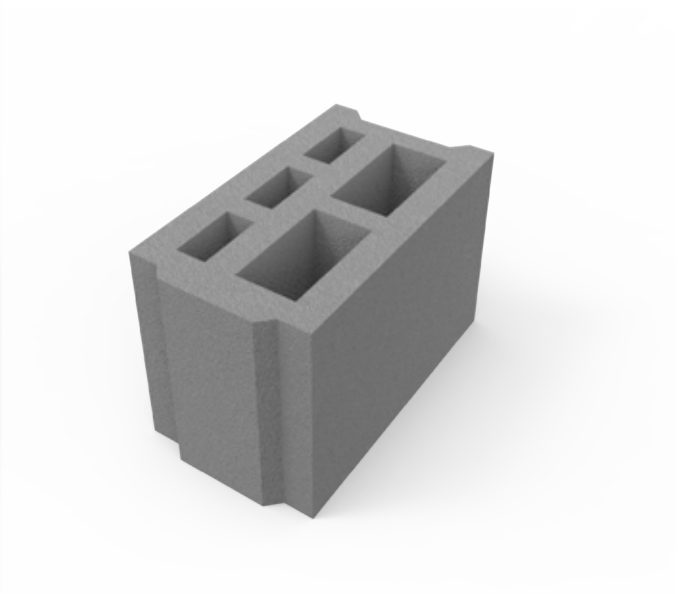
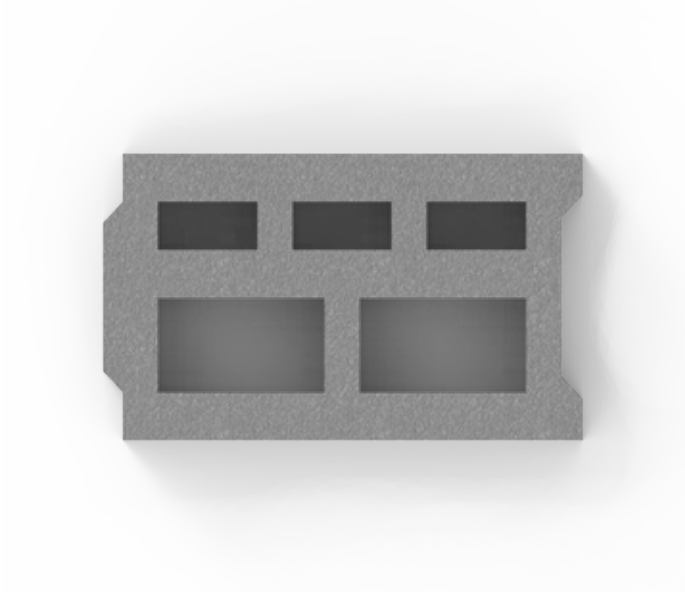
## BETON / BİMS BLOK / *HOLLOW BLOCKS*

Ürün Kodu <i>Product Code</i>	Ölçüler (mm) <i>Dimensions (mm)</i>	Açıklamalar <i>Comments</i>
K6032	200 x 400 x 200	altı kapalı veya açık / geçmeli veya harçlı <i>bottom closed or open / interlaced or mortared</i>
K6033	200 x 400 x 200	



## BETON / BİMS BLOK / HOLLOW BLOCKS

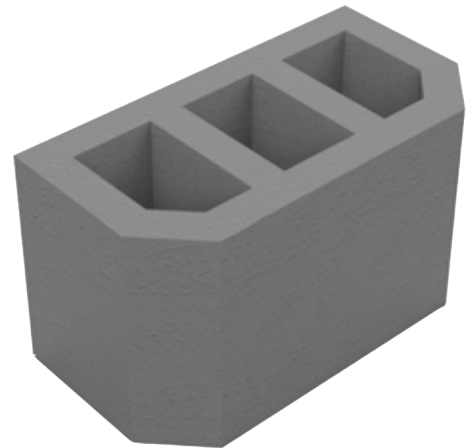
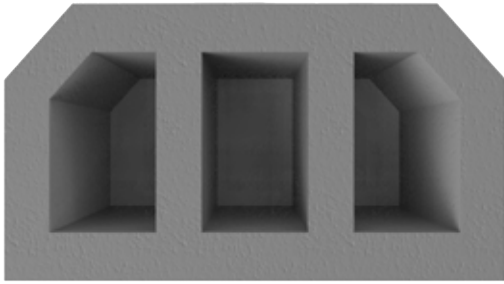
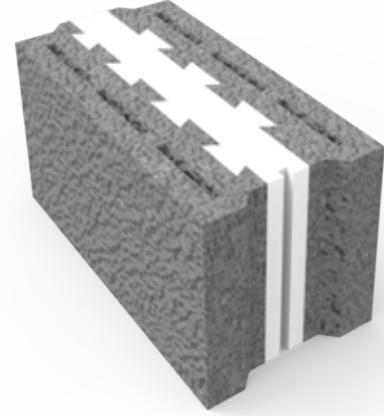
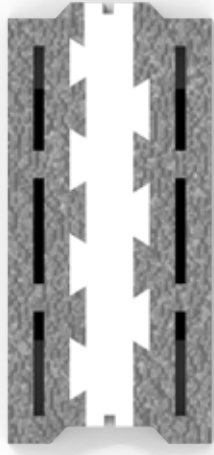
Ürün Kodu <i>Product Code</i>	Ölçüler (mm) <i>Dimensions (mm)</i>	Açıklamalar <i>Comments</i>
K6034	200 x 400 x 200	altı kapalı veya açık / geçmeli veya harçlı <i>bottom closed or open / interlaced or mortared</i>
K6035	250 x 400 x 200	





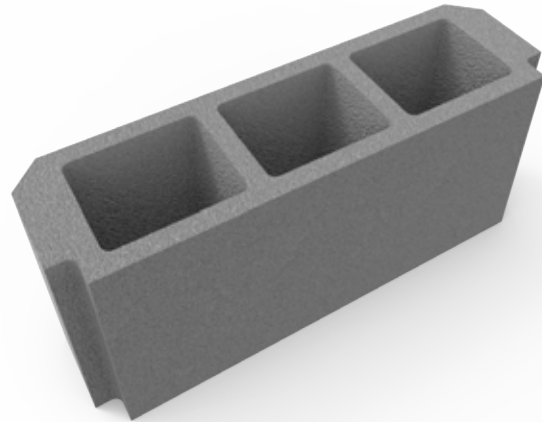
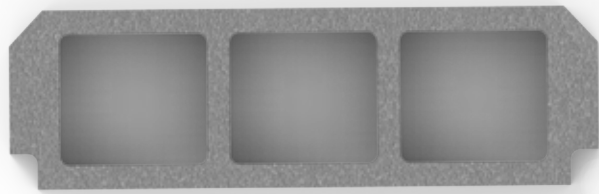
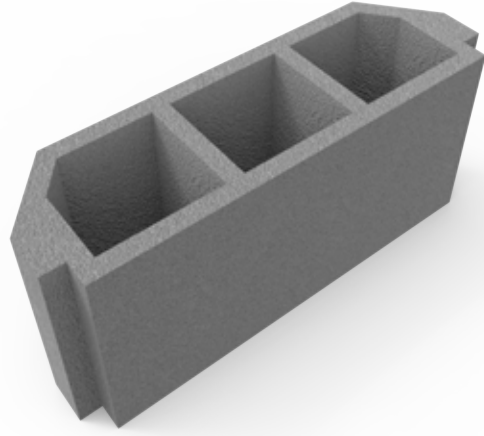
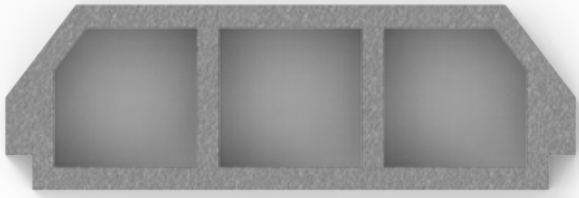
## BETON / BİMS BLOK / *HOLLOW BLOCKS*

Ürün Kodu <i>Product Code</i>	Ölçüler (mm) <i>Dimensions (mm)</i>	Açıklamalar <i>Comments</i>
K6036	200 x 400 x 200	altı kapalı veya açık / geçmeli veya harçlı <i>bottom closed or open / interlaced or mortared</i>
K6037	200 x 400 x 200	

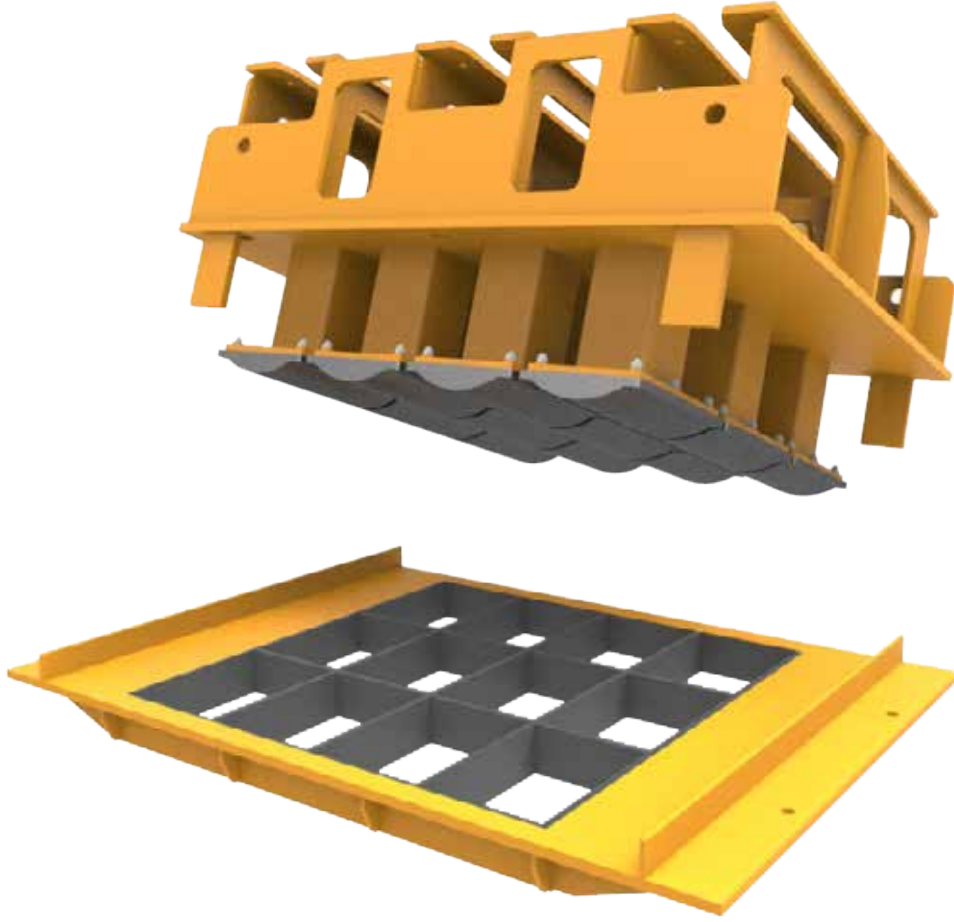


## BETON / BİMS BLOK / HOLLOW BLOCKS

Ürün Kodu <i>Product Code</i>	Ölçüler (mm) <i>Dimensions (mm)</i>	Açıklamalar <i>Comments</i>
K6038	160 x 526 x 200	altı kapalı veya açık / geçmeli veya harçlı <i>bottom closed or open / interlaced or mortared</i>
K6039	150 x 526 x 200	

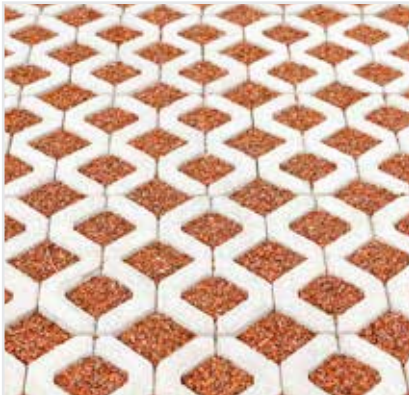


## BETON OLUKLAR | *CONCRETE GUTTERS*



Yol yüzeyine gelen suları tahliye etmek amacıyla tasarlanan beton su olukları kolay uygulanabilirliği ve düşük maliyetli oluşuyla sektörde yaygın olarak kullanılmaktadır. NAMTAŞ, yüksek kalite ve geniş çeşitlilikte ürün yelpazesıyla müşterilerine uygun çözümlerle, talep edilen beton su oluğu kalıplarını sunar.

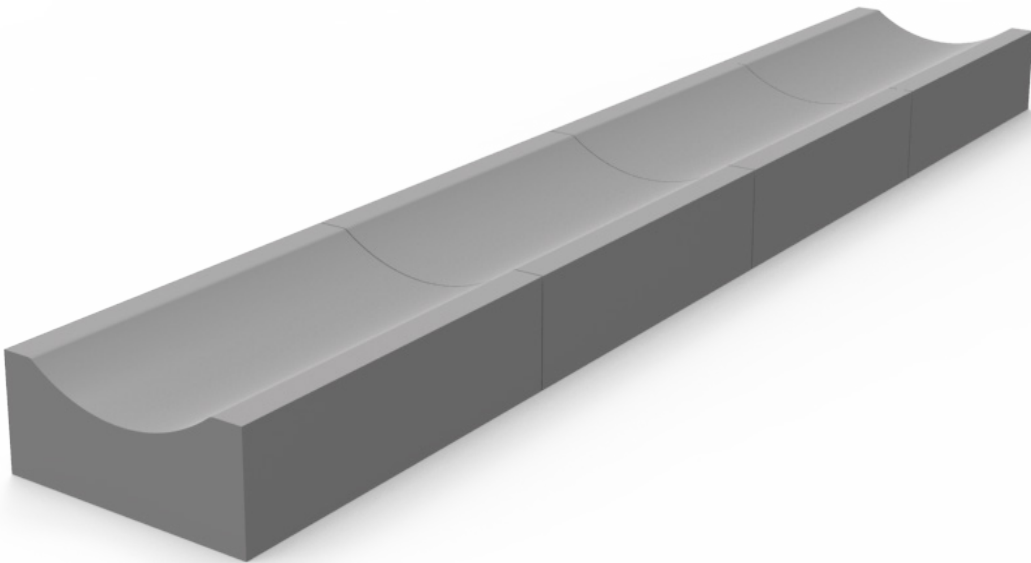
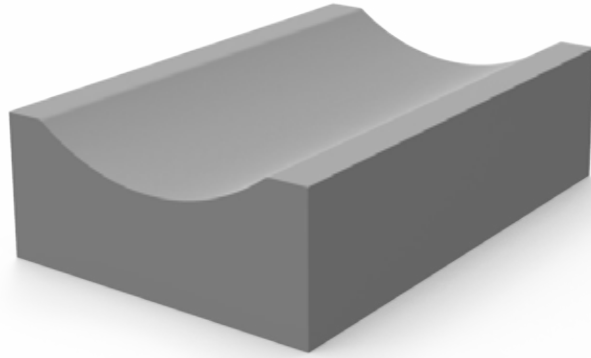
*Concrete gutters are designed for the purpose of evacuation of the standing water on the surface of the road used widely at the sector for easy application and low cost. Namtaş offers the requested concrete gutters' molds with high quality and the wide variety of product range that appropriates solutions to the customers.*





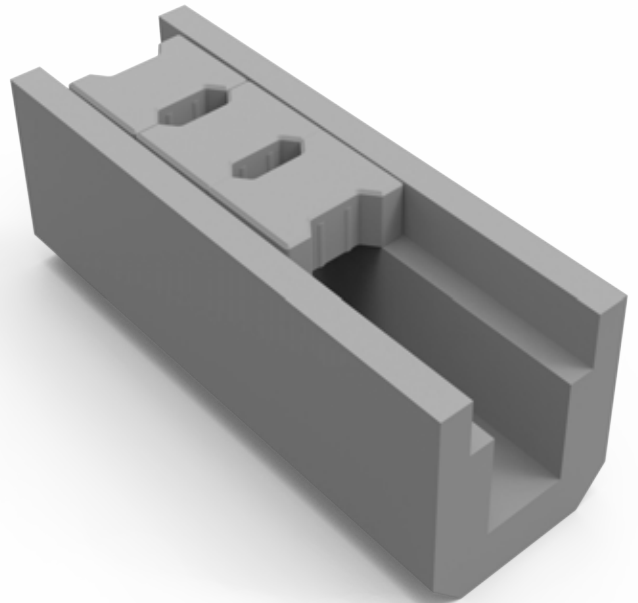
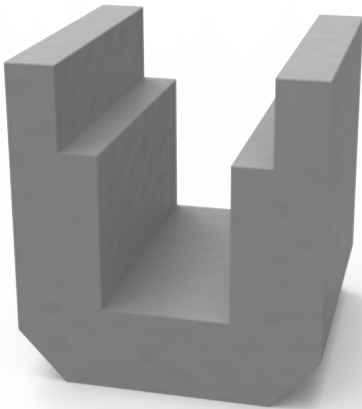
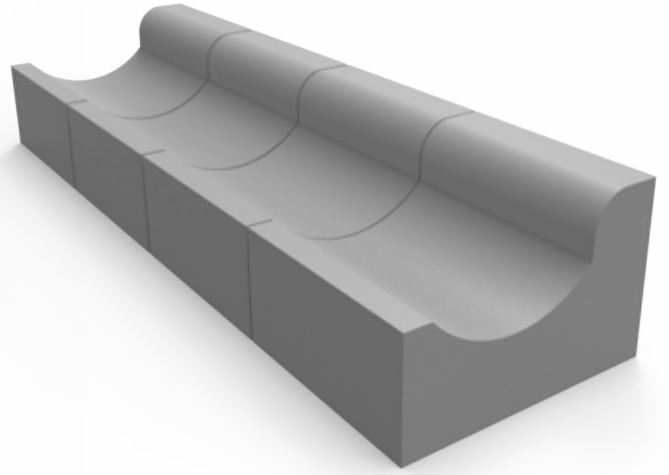
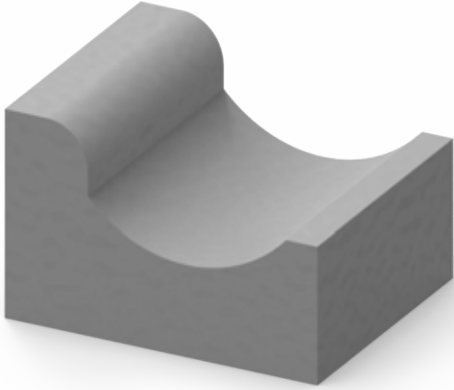
## BETON OLUKLAR | CONCRETE GUTTERS

Ürün Kodu <i>Product Code</i>	Ölçüler (mm) <i>Dimensions (mm)</i>	Açıklamalar <i>Comments</i>
K5010	120/90 x 330 x 500	ölçüler müşteri ihtiyaçlarına göre değişiklik gösterebilir <i>dimensions can be varied according to the customers' needs</i>
K5011	150/120 x 330 x 500	



## BETON OLUKLAR | *CONCRETE GUTTERS*

Ürün Kodu <i>Product Code</i>	Ölçüler (mm) <i>Dimensions (mm)</i>	Açıklamalar <i>Comments</i>
K5012	180/80 x 250 x 300	ölçüler müşteri ihtiyaçlarına göre değişiklik gösterebilir <i>dimensions can be varied according to the customers' needs</i>
K5013	150/80 x 310 x 300	



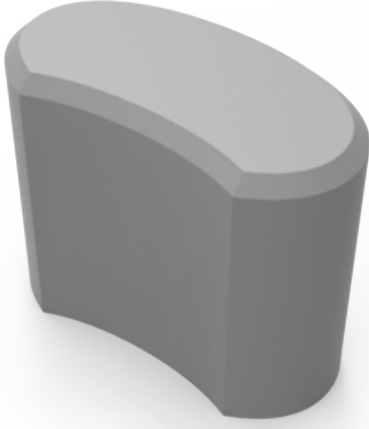






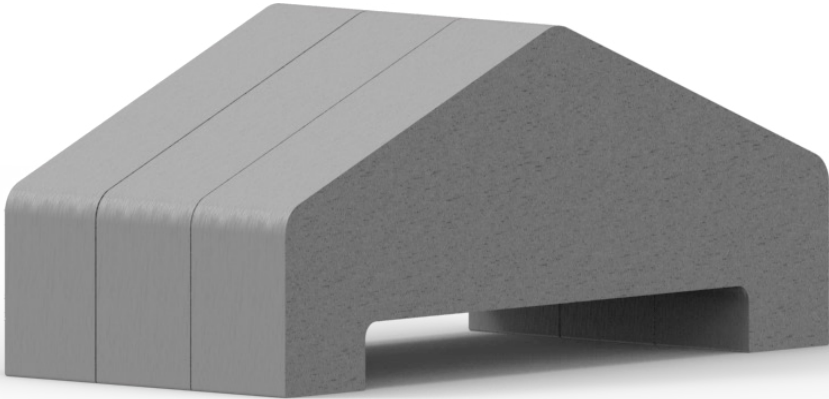
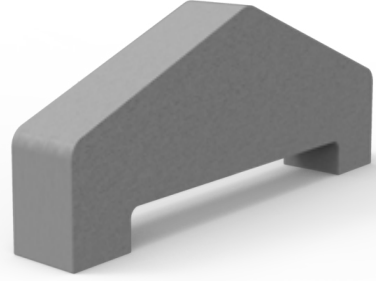
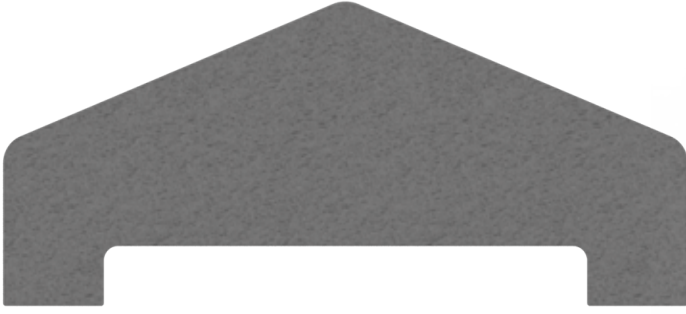
## DEKORATİF ÜRÜNLER | *DECORATIVE PRODUCTS*

Ürün Kodu <i>Product Code</i>	Ölçüler (mm) <i>Dimensions (mm)</i>	Açıklamalar <i>Comments</i>
K7010	150 x 250	ölçüler müşteri ihtiyaçlarına göre değişiklik gösterebilir <i>dimensions can be varied according to the customers' needs</i>



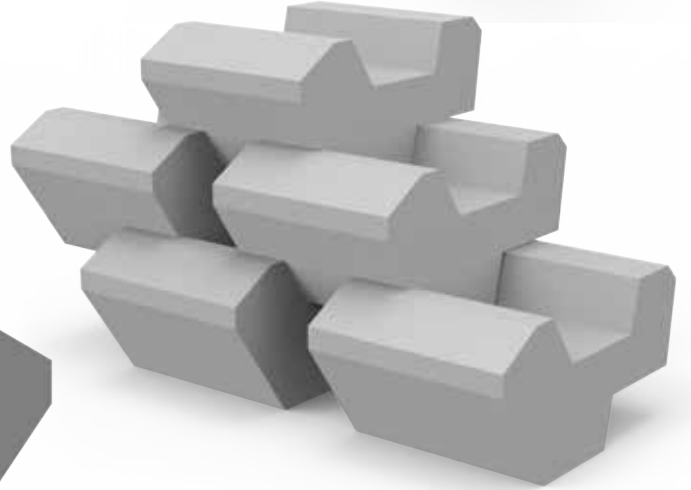
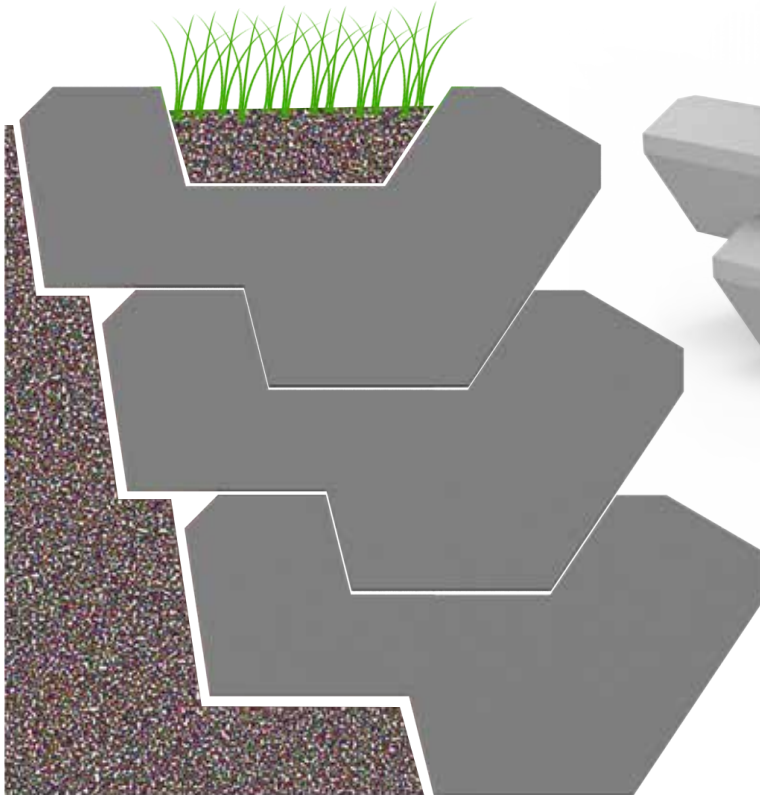
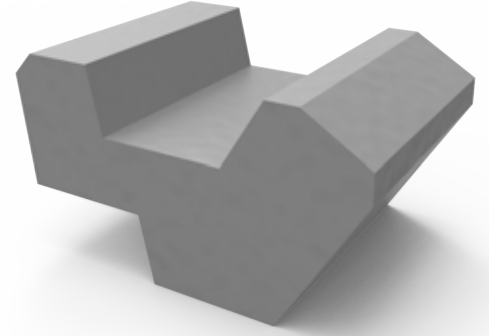
## DEKORATİF ÜRÜNLER | DECORATIVE PRODUCTS

Ürün Kodu <i>Product Code</i>	Ölçüler (mm) <i>Dimensions (mm)</i>	Açıklamalar <i>Comments</i>
K7011	30 x 263 x 160/50	ölçüler müşteri ihtiyaçlarına göre değişiklik gösterebilir <i>dimensions can be varied according to the customers' needs</i>



## DEKORATİF ÜRÜNLER | DECORATIVE PRODUCTS

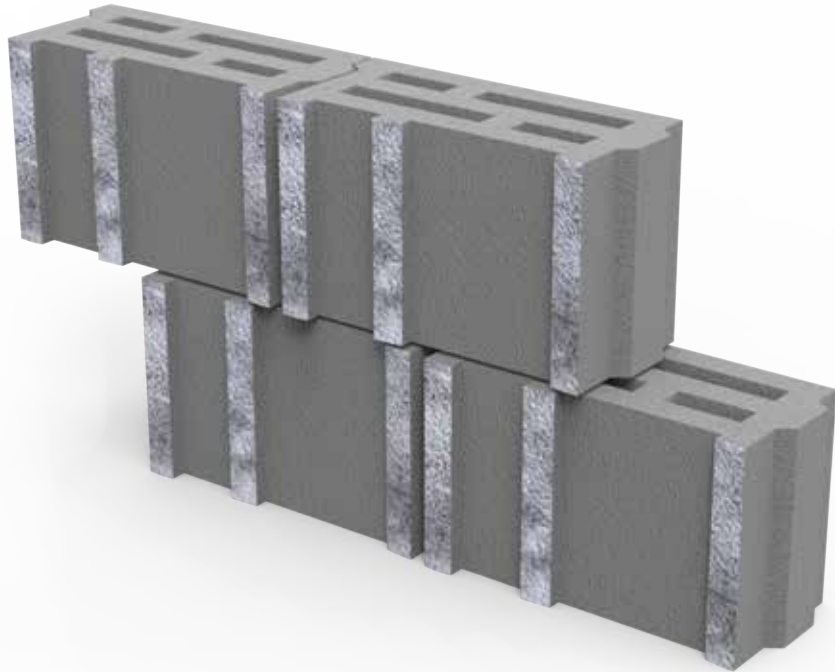
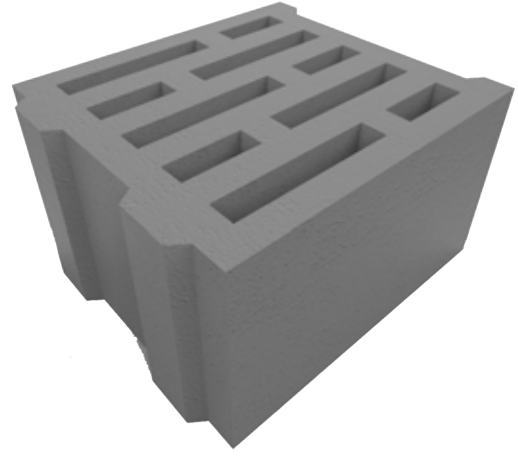
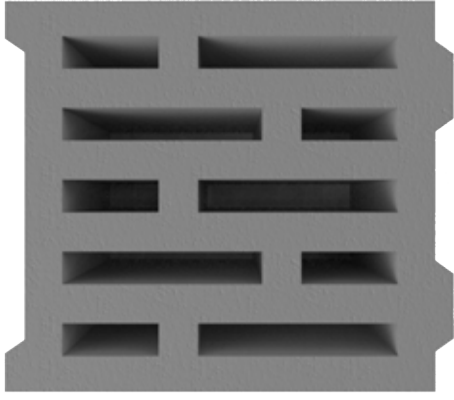
Ürün Kodu <i>Product Code</i>	Ölçüler (mm) <i>Dimensions (mm)</i>	Açıklamalar <i>Comments</i>
K7012	250 x 330 x 250	ölçüler müşteri ihtiyaçlarına göre değişiklik gösterebilir <i>dimensions can be varied according to the customers' needs</i>





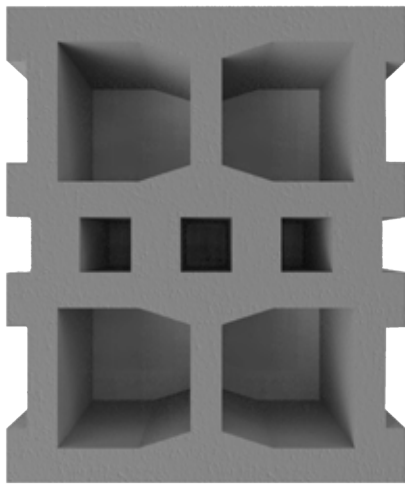
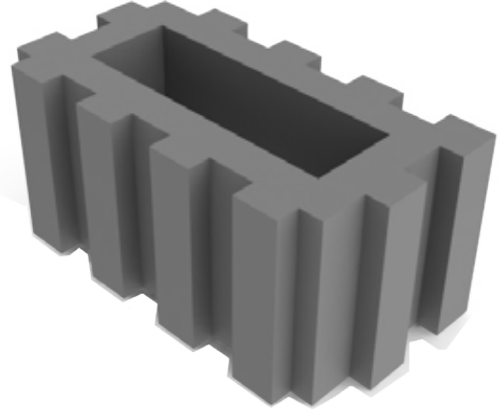
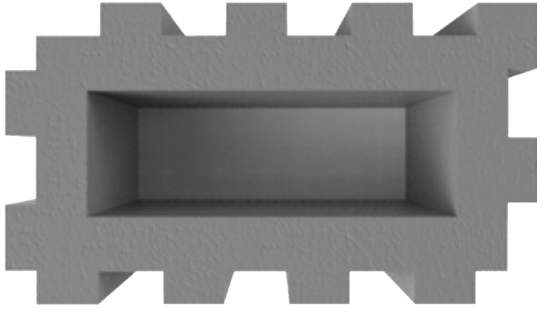
## DEKORATİF ÜRÜNLER | DECORATIVE PRODUCTS

Ürün Kodu <i>Product Code</i>	Ölçüler (mm) <i>Dimensions (mm)</i>	Açıklamalar <i>Comments</i>
K7013	400 x 300 x 200	ölçüler müşteri ihtiyaçlarına göre değişiklik gösterebilir <i>dimensions can be varied according to the customers' needs</i>



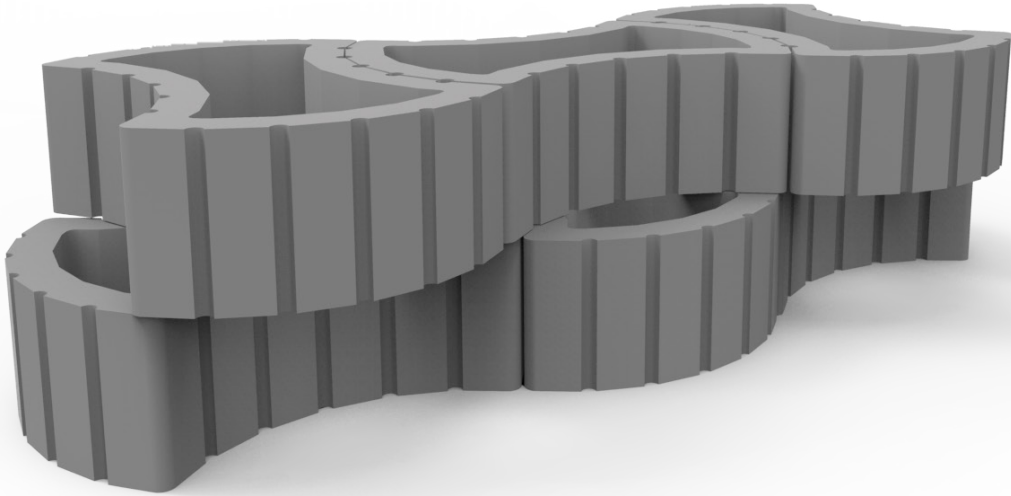
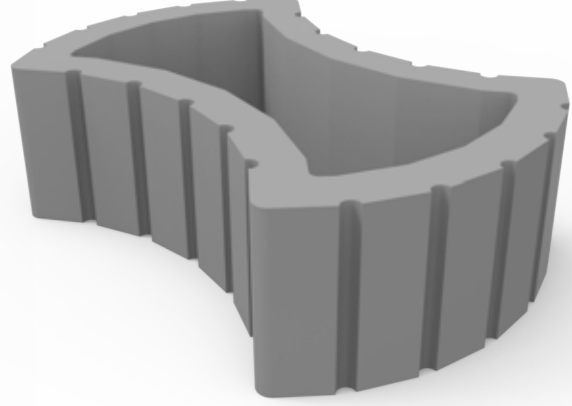
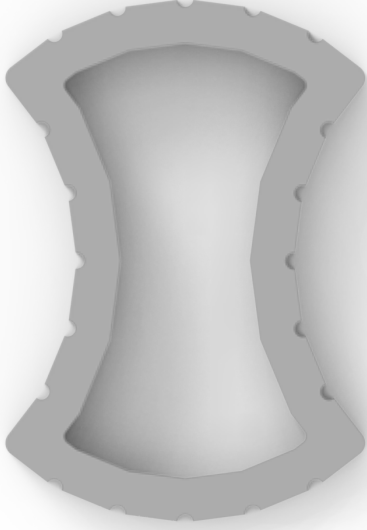
## DEKORATİF ÜRÜNLER | *DECORATIVE PRODUCTS*

Ürün Kodu <i>Product Code</i>	Ölçüler (mm) <i>Dimensions (mm)</i>	Açıklamalar <i>Comments</i>
K7014	400 x 190 x 200	ölçüler müşteri ihtiyaçlarına göre değişiklik gösterebilir <i>dimensions can be varied according to the customers' needs</i>
K7015	300 x 400 x 200	



## DEKORATİF ÜRÜNLER | DECORATIVE PRODUCTS

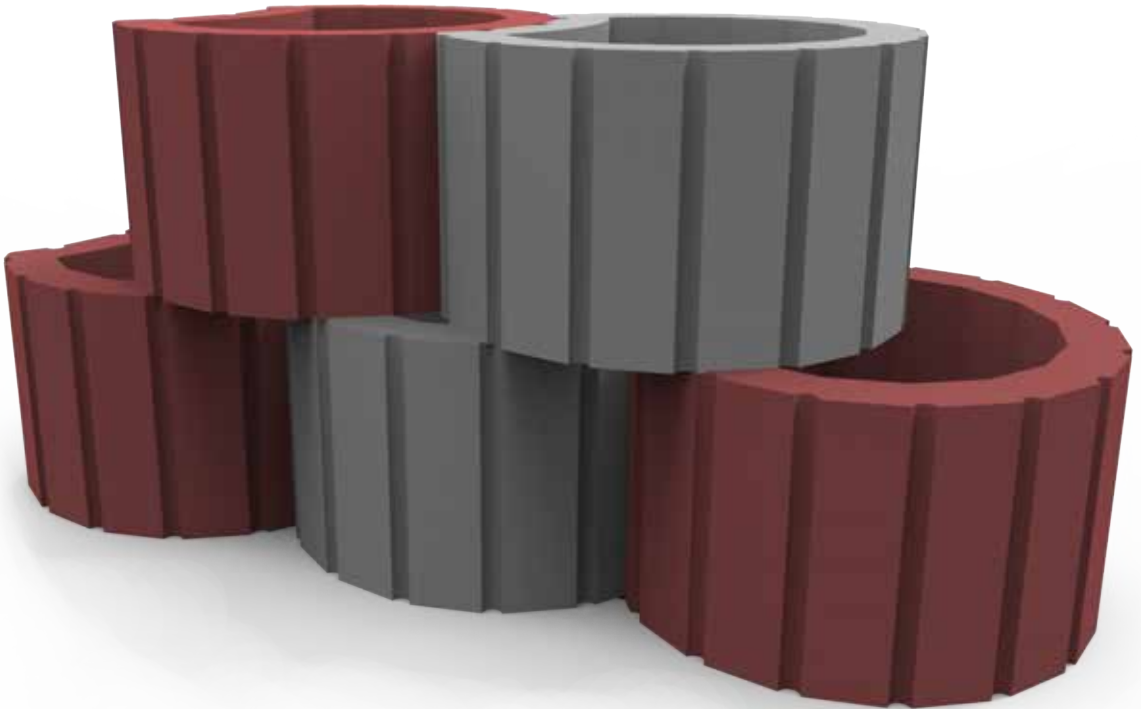
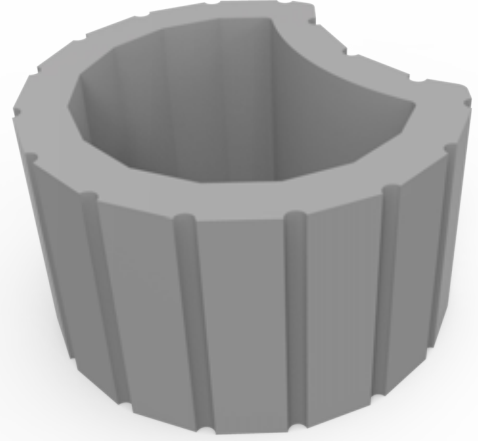
Ürün Kodu <i>Product Code</i>	Ölçüler (mm) <i>Dimensions (mm)</i>	Açıklamalar <i>Comments</i>
K7016	320 x 470 x 150	ölçüler müşteri ihtiyaçlarına göre değişiklik gösterebilir <i>dimensions can be varied according to the customers' needs</i>





## DEKORATİF ÜRÜNLER | *DECORATIVE PRODUCTS*

Ürün Kodu <i>Product Code</i>	Ölçüler (mm) <i>Dimensions (mm)</i>	Açıklamalar <i>Comments</i>
K7017	280 x 347 x 200	ölçüler müşteri ihtiyaçlarına göre değişiklik gösterebilir <i>dimensions can be varied according to the customers' needs</i>







BETON TESİSLERİNİZE, AKILLI ÇÖZÜMLER  
*SMART SOLUTIONS FOR YOUR CONCRETE FACILITY*











Namtaş Beton Makinaları & Beton Ürünleri Ltd. Şti.  
Namtaş Concrete Machines & Concrete Products Ltd. Co.

Ankara Asfaltı 26. Km Kemalpaşa, İzmir, TÜRKİYE  
TEL: +90 232 878 13 59 FAX: +90 232 878 77 65  
[www.namtas.com](http://www.namtas.com)